

XMAX300 - SLIP-ON BL (EU5) (M-HR075)

90798-33476-00

Black painted muffler with stainless steel header pipes.
Carbon end cap and heat shield Laser

- Made of high quality, heat resistant stainless steel
- Exciting sound & design
- Street legal due to Catalytic Converter (included)
- Noise reduction insert (not removable)
- Carbon fiber end cap
- Including Fitting kit



XMAX300 - SLIP-ON SS (EU5) (M-HR075)

90798-33475-00

Black titanium muffler with stainless steel header pipes.
Carbon end cap and heat shield Laser

- Made of high quality, heat resistant stainless steel
- Exciting sound & design
- Street legal due to Catalytic Converter (included)
- Noise reduction insert (not removable)
- Carbon fiber end cap
- Including Fitting ki



XMAX125 SLIP-ON SL T (EU5)

90798-34601-00

Black painted/ titanium muffler with stainless steel header pipes.
Carbon end cap and heat shield Laser

- Made of high quality, heat resistant stainless steel
- Exciting sound & design
- Weight reduction thanks to usage of quality materials
- Street legal with optional catalytic convertor installed
- Laser engraved XMAX logo
- PAY ATTENTION: installation require cutting of standard muffler.

COMING
SOON

XMAX125 SLIP-ON SL BL (EU5)

90798-34602-00

Black painted muffler with stainless steel header pipes.
Carbon end cap and heat shield Laser

- Made of high quality, heat resistant stainless steel
- Exciting sound & design
- Street legal with optional catalytic convertor installed
- Laser engraved XMAX logo
- Black coated muffler body
- PAY ATTENTION: installation require cutting of standard muffler

COMING
SOON

XMAX125 RE-ASSEMBLY KIT

90798-34601-01

Re-assembly kit for XMAX125 to re-install the original exhaust that has been cut off to install the Akrapovič exhaust

COMING
SOON

SCRATCH FAIRING PROTECTOR PU

BKA-21980-00-00

To avoid scratches on your nice cowling

- Includes the XMAX logo on the protector
- Prevent scratches on your cowling
- Fits your unit



ADD-ON SCREEN WIDE

B3T-F83M0-00-00

Fully adjustable add-on screen to increase weather protection

- Features YAMAHA brand
- Wide range of adjustability for custom comfort
- Installation with no modification to OE screen
- Increased wind and weather protection



HIGH SCREEN

BKA-283J0-10-00

Large screen for improved wind protection when riding

- Offers additional wind protection
- Designed specifically for the XMAX
- Strong and durable screen
- Features the XMAX logo



FOOT PANEL FLOOR XMAX 23

BMK-F74M0-10-00

Quality foot panels for an added stylish look. Anodized Aluminium with rubber pads.

- Quality foot panels for an added stylish look
- Nice textured rubber with anodized Aluminium plates
- Sold per set



SPORT SCREEN XMAX 23

BKA-283J0-00-00

This dark smoked short screen gives your Yamaha a sporty look

- Offers wind protection as well
- Features the XMAX logo



LICENSE PLATE HOLDER XMAX 23

BMK-H4550-00-00

Stylish license plate holder to replace the original

- New light weight design
- Features the XMAX logo
- Easy assembly
- Includes homologated LED license plate light
- Includes bracket for original side reflectors



COVER FOR LPH XMAX 23

BMK-F163A-00-00

Plastic Cover required for installation of optional License Plate Holder

- Required when optional License Plate Holder is mounted



APRON 2 SEASON

BKA-F47L0-00-00

Rain and wind shouldn't stop you from activities, and neither should they affect your riding pleasure and comfort. We developed the Apron, which uses special welding technology, to keep you warm and dry, so you can be more comfortable and safer during harsh weather conditions.

- Features a tailored cover for the entire seat, so the seat always remains dry
- Equipped with anti-theft cable
- Features a reflective XMAX logo
- For fair weather, you can easily remove the Apron from the unit



CONSOLE BAG

B9Y-F0750-00-00

Bag for additional luggage storage; placed between seat and leg shield

- Fully padded to protect your belongs. Includes two inner pockets to store your valuables
- It comes with a shoulder strap, so you carry it with you on the go
- It's water repellent
- Volume: 18L



HAND MUFFS

BKA-FHM00-00-00

Cover to keep your hands as warm as possible during cold weather conditions.

- Designed and developed with input from the model's engineers
- Soft, fleece-style inner lining, providing insulation for the colder months
- Combine it with the design-matching optional XMAX Apron and riding in cold and wet conditions
- Contains a see through screen to view your switches



FOOT PANEL FRONT XMAX 23

BMK-F74M0-00-00

Quality foot panels for an added stylish look. Anodized Aluminium with rubber pads

- Quality foot panels for an added stylish look
- Features X-MAX logo engraved on aluminum part
- Sold per set



LOW SEAT XMAX 23

BMK-F4730-A0-00

We, at Yamaha, want to make sure that all our customers have the best experience while riding our products. For those, who find the standard seat on the XMAX a little high, we created the Low seat. It improves access to the ground, so that you can plant your foot comfortably on the road.

- The foot access to the ground improves by 40mm
- Thicker cushioning and better reach than the standard seat



COMFORT SEAT XMAX 23

BMK-F4730-B0-00

Featuring an exclusive design and manufactured from high quality materials, this premium Comfort Seat ensures an even more relaxing and enjoyable ride.

- High quality materials
- Enhances ride comfort
- Features a metal plate with engraved logo



BRAKE LEVER

BKA-FRBL0-00-00 Rear
BKA-FFBL0-00-00 Front

Adjustable anodized aluminum rear brake lever. Add color rings for your personalization.



LEVER ACCENT KIT

BKA-FAKSV-00-00 Silver
BKA-FAKBK-00-00 Black
BKA-FAKBE-00-00 Blue
BKA-FAKRD-00-00 Red

Anodized aluminum color accent kit for adjustable levers.



KNUCKLE VISOR XMAX 23

BKA-285F0-00-00

Protectors for your hand against the elements, especially during wind and rain.

- Made of strong and durable material
- Gives a sporty look to your scooter
- Provides additional riding comfort



REAR CARRIER BASE KIT

BKA-248D0-00-00

High quality finished carrier to be mounted to the rear of the unit, to fit the top case mounting plate.

- Easy installation
- Can fit both the top case plate as the backrest stay



TOPCASE MOUNTING PLATE

B7N-284X0-03-00

Top-case mounting plate to be installed on YAMAHA Genuine rear-carrier base.

- Plate to allow fitment of the optional available 39L and 50L
- Required when the top cases are used in conjunction with the optional model-dedicated Rear Carrier
- Easy installation



HEBELVERRIEGELUNG

52S-21780-09-00

One-piece lock set to close off the Top Cases

- Fits all Yamaha Top Cases



TOP CASE 45L

BBW-F840E-10-00

Standard top Case 45L (Base)

- Colour plates required for finishing the top case
- Top case capacity 45L, can fit 2 full face helmets
- Prepared for matching unit key lock system
- Optional back rest available
- Optional Inner bag available
- Optional smoke reflectors available



BACKREST TOP CASE 45L

BBW-F84U0-10-00

Backrest to fit Top Case 45L

- Fits perfectly the Top Case 45L
- Gives additional comfort for the passenger
- Compliments the style of the top case



INNER BAG 45L TOP CASE

YME-BAG45-00-00

Yamaha branded Inner bag for Top Case 45L

- Fitted soft bag to put inside the Top Case 45L
- Allows for easy loading and unloading of your luggage from the top case
- Includes hand strap for easy carrying
- Expandable to create more volume when required



TOP CASE 34L

BBW-F840E-00-00

Standard Top Case 34L (Base)

- Colour plates required for finishing the top case
- Top case capacity 34L, can fit 1 full face helmet or 2 most sizes jet helmets
- Prepared for matching unit key lock system
- Optional back rest available
- Optional Inner bag available
- Optional smoke reflectors available



BACKREST TOP CASE 34L

BBW-F84U0-00-00

Backrest to fit Top Case 34L

- Fits perfectly the Top Case 34L
- Gives additional comfort for the passenger
- Compliments the style of the top case



INNER BAG 34L TOP CASE

YME-BAG34-00-00

Yamaha branded inner bag for Top Case 34L

- Fitted soft bag to put inside the Top Case 34L
- Allows for easy loading and unloading of your luggage from the top case
- Includes hand strap for easy carrying
- Expandable to create more volume when required

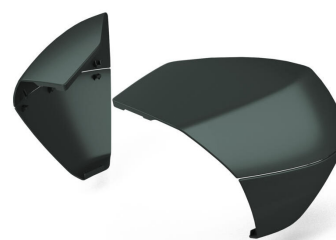


TOP CASE PLATE - MDBNM4

BBW-F84W1-A0-17

Plastic (colour) plate for Top Cases 34L and 45L

- Personalize your top case by choosing your desired colour
- Possibilities to match your unit colour



TOP CASE PLATE - MDNM1

BBW-F84W1-A0-18

Plastic (colour) plate for Top Cases 34L and 45L

- Personalize your top case by choosing your desired colour
- Possibilities to match your unit colour



TOP CASE PLATE MDNM6

BBW-F84W1-A0-30

Plastic (colour) plate for Top Cases 34L and 45L

- Personalize your top case by choosing your desired colour
- Possibilities to match your unit colour

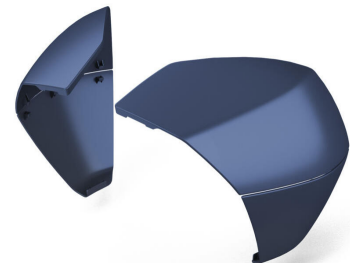


TOP CASE PLATE - MBM3

BBW-F84W1-A0-12

Plastic (colour) plate for Top Cases 34L and 45L

- Personalize your top case by choosing your desired colour
- Possibilities to match your unit colour



BACK REST SET KIT

BV1-F84U0-00-00

Back-rest stay to be installed on YAMAHA Genuine rear-carrier base

- Easy installation: Mounting point is on grab bar
- Function: Uses backrest cushion
- Style: Integrated design with Unit Concept
- Uniqueness: Comfort tag included
- Style: Perfect match with seat pattern and stitching



TMAX / XMAX 300 BACKREST PAD-GREY

BV1-F843F-00-00

Cushion for the Passenger Backrest Stay

- High quality material and finishing
- Integrated design with the optional backrest stay
- Features Yamaha logo on back of the backrest pad
- Available in four colour variations



BACKREST PAD-GOLD

BV1-F843F-10-00

Cushion for the Passenger Backrest Stay

- High quality material and finishing
- Integrated design with the optional backrest stay
- Features Yamaha logo on back of the backrest pad
- Available in four colour variations



GRIP HEATER - 120MM

YME-F2960-10-00

Programmable grip heater for comfortable warm hands

- 3 heating settings
- Programmable per motorcycle or scooter engine type
- Boost-up heating function for quick warm hands
- Automatic shut-off to avoid battery drainage



THROTTLE GUIDE KIT

B74-F6240-00-00

This KIT is need for some units to fit the Heated Grips



CONNECTOR CABLE GRIPHEATER

B74-H253L-00-00

This connector cable can be used for easy apply your heated grips to your unit by plug and play



STAY FOR TPMS

B74-F34A1-00-00

Stay to mount the Tire Pressure Monitor System on your scooter

- Easier mounting of the Tire Pressure Monitor
- Ideal position for control and visibility
- Kit with coated bracket, high tensile bolts and bushings.
- Mounting instructions included



TIRE PRESSURE MONITORING KIT

YME-HTPMK-00-00

Tire Pressure Monitoring System. Electronic wheel sensors giving the tire pressure to a display via a Bluetooth connection.

- Warning when the pressure is too low or too high
- High temperature alarm value: +80C/+176F
- Internal sensors for front and rear wheel
- Waterproof and dustproof display
- Battery life >5 years
- Includes 8,3 & 11,5mm Diameter valves



XMAX 300 COMPARTMENT DIVIDER + BAG

B74-F85M0-00-00

A special bag which you can easily fix with a magnet on the delivered plate in the compartment of your X-MAX



BAR MOUNT PRO SP

YME-FMKIT-00-02

Attach your SP Connect Phone Case, or other SP Connect™ compatible devices to your motorbike with the MOTO Mount PRO. The mount is CNC milled out of aircraft grade aluminum and fits standard and oversized handlebars. To further protect your smartphone the mount also has a unique vibration dampening system that cuts G-forces by up to 40% (depending on bike & phone model). You can mount it with the positioning arm or as a direct clamp mount - both versions allow 360° rotation to find the perfect position.



WIRELESS CHARGING MODULE

YME-FWIRE-00-02

WIRELESS CHARGING MODULE can be mounted on any SP Connect mount. Just as it did without, your SP Connect Phone Case attaches in seconds with a 90 °turn. Now all you must do is attach this module for wireless charging to a power source (USB socket, battery, power bank, ...) and you can charge your smartphone on the go. Now, if you have planned longer trips, you do not have to worry about your smartphone battery losing power.

- Weatherproof
- Compatible with all SP Connect MicroRail mounts and adapters



ANTI VIBRATION MODULE SP

YME-FAVM0-00-00

Use the SP Connect ANTI VIBRATION MODULE to further reduce vibrations for a variety of frequency ranges. The development of this new product is a reaction to the complexity of newer smartphone models, whose camera systems consist of increasingly sensitive components. The specially developed elastomer inlay dampens in all directions and stops up to 60% of vibrations (e.g. from the motorcycle engine) that could affect the mechanical image stabilizer of the camera.



END GRIP

B9Y-F6246-U0-00

Attractive Grip End to improve the looks of your unit

- Enhance the looks of your product



UNIVERSAL STAY

B74-F81A0-20-00

Universal base for smartphones and devices

- Developed to hold a smartphone or GPS system
- Can be installed near the speedometer for convenient visibility for the rider
- Ready-connection to fit an additional USB connector



USB-C FAST CHARGER 18W

BMK-H6600-00-00

Gives you possibility to charge your phone. For USB-C type connectors

- USB type C connector
- 18Watt Charger, PD3.0 protocol
- 75cm cable with strain relief and YAMAHA connector
- Protected against overcharge, high voltage
- Smart detect Apple and Android phones
- Waterproof to IP64 when in Yamaha mount
- CE approved and homologated for YAMAHA models



USB CHARGER

B4T-H6600-00-00

USB 5 Volt outlet kit for pre-wired units

- Waterproof to IP64 when genuine Yamaha mount is used
- 2.4Amp for charging smartphone and similar devices
- Smart detect Apple and Android phones
- Protected against overcharge, high voltage, short circuit and high temperature
- Green indicator LED
- 75cm cable with strain relief and connector for pre-wired Yamaha models



SMART KEY COVER

90798-LSKC5-00	Blue
90798-LSKC4-00	Brown
90798-LSKC1-00	Black

Nice leather cover especially made for your YAMAHA smart key.

- Made of leather material, soft and comfortable
- Nicely stitched
- Includes the YAMAHA tuning fork logo
- Available in different colors



Produktänderungen, Liefermöglichkeiten und Irrtümer vorbehalten.
Sous réserve de modifications, capacités de livraison et d'erreurs.

*Yamaha Original Zubehör bei Ihrem Yamaha Vertragspartner erhältlich
Accessoires d'origine Yamaha disponibles auprès de votre partenaire Yamaha