

MT125 FULL SYSTEM TI EU5

90798-32704-00

This is a non-Yamaha branded product and is fully developed and produced by Akrapovič.

- Made of high quality, heat resistant titanium alloys
- Headers and link pipe are made of stainless steel
- Features exclusively laser engraved YZF-R125 logo
- Exciting sound & design
- Easy installation
- Street legal



MT125 FULL SYSTEM TI EU5

90798-32705-00

This is a non-Yamaha branded product and is fully developed and produced by Akrapovič.

- Made of high quality, heat resistant titanium alloys
- Headers and link pipe are made of stainless steel
- Features exclusively laser engraved YZF-R125 logo
- Exciting sound & design
- Easy installation
- Street legal



LOWERING KIT MT125 2023

BSU-FLWK0-00-00

Improving rider ground accessibility.

- For easier ground accessibility
- Will reduce seat height by 20 mm
- Made of durable stainless steel
- TUV approved (**coming soon**)



BILLET BRAKE LEVER

BNU-FFBRL-00-00

High quality finished brake or clutch lever, replacing the original.

- Adjustable anodised aluminum brake lever.
- Add coloured rings for your personalization (see below).



BILLET CLUTCH LEVER

BNU-FCLLV-00-00

High quality finished brake or clutch lever, replacing the original.

- Adjustable anodised aluminum clutch lever.
- Add coloured rings for your personalization (see below).



LEVER COLOURED RINGS

BKA-FAKBK-00-00 (black)

BKA-FAKBE-00-00 (blue)

BKA-FAKSV-00-00 (silver)

BKA-FAKRD-00-00 (red)

Anodised aluminium colour accent kit for adjustable levers.

- Kit contents are for a complete set of two levers
- Coordinate your Gilles levers with your Yamaha.



SIDE PADS HDR MT125 2023

BSU-FSTPD-00-00

Specific high-density rubber (HDR) tank side grip pads for MT-125.

- Rugged rubber material for maximum grip and control
- Stylish MT logo
- Integrated design
- Protects tank sides from riding gear
- Adhesive needs 24hr to cure before using vehicle
- Heavy duty 3M adhesive



TANK PAD HDR MT125 2023

BSU-FTPAD-00-00

Specific high-density rubber (HDR) tank pad for the MT-125.

- Rubberised texture for maximum protection
- 3D Sporty design with MT logo
- Great to combine with the optional matching Side Grip Pads
- 3M VHB adhesive



RIM STICKER MT-125 2023

BSU-FSTFR-00-00 (front)

BSU-FSTRR-00-00 (back)

Reflective rim stickers featuring MT-125 logo.

- "Stealth" look on dark rims or contrast for light
- Stylish MT-125 logo
- Reflective 3M rim sticker for horizontal wheel surface
- Durable finish
- Style and safety in one!



CHAIN GUARD MT125

BSU-FCHPR-00-00

Exclusively designed chain guard to replace the standard plastic chain guard featuring the MT logo.

- Enhances the looks of your MT-125
- Exclusively designed chain guard to replace the standard plastic chain guard
- featuring the MT logo.



GRIP HEATER - 120MM

YME-F2960-10-00

Programmable grip heater for comfortable warm hands.

- 3 heating settings
- Programmable per motorcycle or scooter engine type
- Boost-up heating function for quick warm hands
- Automatic shut-off to avoid battery drainage



THROTTLE GUIDE KIT

B74-F6240-00-00

Kit necessary on some units to fit the Heated Grips.

- Easily exchangeable KIT to fit the heated grips



ENGINE PROTECTOR

B7D-E5411-M3-SB (left)
B7D-E5421-M3-SB (right)

Protectors placed on the side of the engine to prevent accidental damage to the engine as much as possible.

- Does not affect the banking angle of the unit
- High quality finish
- Enhances the tough looks of your Yamaha

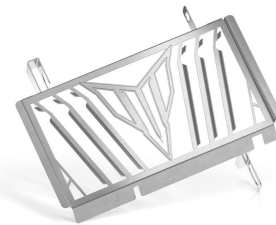


RADIATOR COVER

B7D-F1557-MA-ST

Stylish radiator cover.

- Provides protection against small stone/debris impact.



LPH 2.0 MT-125 MY21

B6G-F16E0-00-00

Stylish license plate holder to replace the original for your MT-125.

- New light weight design
- Features the MT-125 Logo
- Includes homologated LED license plate light
- Adds extra style to your Yamaha
- Supports the standard and optional LED flashers
- Easy assembly



FLY SCREEN SMOKED

B7D-F61AA-M2-SM

Stylish fly screen to enforce the looks of your MT-125.

- Integrated design
- Features the MT-125 logo



LED BLINKER SET ARROW

YME-H0789-20-30 (carbon matte)

YME-H0789-00-30 (black)

Stylish flashers to replace the standard flashers.

- Unique design by GK Design specially for Yamaha
- Includes blinker speed regulating resistor
- 9 LEDs per blinker
- 55cm long wire with shrink sleeve
- Sold per set of two.



WIRE HARNESS LED FOR BLINKERS

BK6-FCABL-00-00

Wire harness to simplify installation of LED blinkers.

- Simplify installation of LED blinkers.

