

## MT09 FULL SYSTEM (EU5 PLUS) TI

90798-32412-00

High-quality exhaust with exciting sound.

- Make your Yamaha look even cooler with the full exhaust system, especially engineered by Akrapovic for Yamaha MT-09!
- Exciting sound & design
- Features exclusively laser engraved MT-09 logo
- Street legal.



## MT09 FULL SYSTEM (EU5 PLUS) BL

90798-32413-00

High-quality exhaust with exciting sound.

- Make your Yamaha look even cooler with the full exhaust system, especially engineered by Akrapovic for Yamaha MT-09!
- Exciting sound & design
- Features exclusively laser engraved MT-09 logo
- Street legal.



## MULTI MOUNT BASE MT-09 2024

BME-283L0-00-00

Base structure to mount various accessories and customize your bike.

- The fun starts from here, minimum design with enough strength to mount other accessories
- Specifically designed for this model
- Required to mount MIDDLE SCREEN, FLY SCREEN, ALUMINUM VISOR and/or BAR END BASE and others



## ALUMINUM VISOR MT

BME-261C0-00-00

Stylish aluminum visor with MT logo.

- Simple but eye-catching visor gives something different image to unit face
- Easy mount on MULTI MOUNT BASE.
- Easy on and off depending on the application



## MIDDLE SCREEN MT

BME-283J0-00-00

The middle height screen provides additional wind protection due to seamless integration.

- Easy mount on MULTI MOUNT BASE
- Easy on and off depending on the application
- Improve wind protection while keeping sportiness.
- Fully tested to ensure excellent wind protection without annoying turbulence



## FLY SCREEN

BME-283M0-00-00

Short stylish screen to reinforce the looks of your MT-09.

- Modern, integrated design
- Easy mount on MULTI MOUNT BASE
- Easy on and off depending on the application



## BAR END BASE MT

BME-285F0-00-00

Stylish handle mount base gives versatility of style.

- Easy mount with MULTI MOUNT BASE
- Provides versatility to mount other equipments



## KNUCKLE DEFLECTOR MT

BME-283T0-00-00

Improve Wind protection for Knuckle & Arm area.

- Easy on and off depending on the application.
- Requires MULTI MOUNT BASE and BAR END BASE for installation.



## COMFORT DESIGN SEAT MT-09 2024

BME-247C0-A0-00

Exclusively designed, stylish seat, providing extra sitting comfort on long-distance journeys.

- Compliments the stylish design of your Yamaha
- High-quality design materials
- Special foam provides all-day comfort.



## COMFORT DESIGN SEAT PASSENGER

BME-247E0-A0-00

Exclusively designed, stylish seat, providing extra sitting comfort on long-distance journeys for passenger.

- Compliments the stylish design of your Yamaha
- High-quality design materials
- Special foam provides all-day comfort.



## LEVERGUAD BLINKER SET MT-09 2024

BME-285F0-00-00

Complementing the aggressive look of the MT-09, the new integrated indicator handguards are a must have, providing a perfect balance between style, protection, comfort and functionality.

- Integrated high-intensity indicators
- Cast aluminium and machined construction
- Includes cosmetic blanking plates to conceal the OE indicators' position after removal
- Adds an exclusive style enhancement to your bike.



## BAR END MIRROR

BME-FBEMR-00-00

heritage

BME-FBEMD-00-00

diamond

Stylish bar end mirror

- Billet aluminum round shape bar-end mirrors enhance customize image of your motorcycle.



## RADIATOR GUARD MT-09 2024

BME-FRADC-00-00     black  
BME-FRADC-00-01     steel

Stylish aluminum radiator cover to replace the original.

- High quality durable finish
- Stylish aluminium radiator cover
- Provides protection against small stone/debris impact
- Compliments the bike's styling.



## TANK SIDE GRIP PADS

BME-FSTPD-00-00

Specific tank side pads for MT-09

- Stylish MT logo with functional tank grip integrated design
- Rugged rubber material for maximum grip and control
- Protects tank sides from riding gear
- Heavy-duty 3M adhesive
- Adhesive should be left for 24 hours to cure before using vehicle.



## LICENSE PLATE HOLDER MT-09 2024

BME-FLPH0-00-00

Stylish license plate holder to replace the original.

- Sporty and light weight design
- Features MT-09 logo
- Supports the standard flashers and the optional available LED flashers
- Includes bracket for original reflector
- Includes CE approved LED licence plate light
- Easy assembly.



## SIDE SLIDER MT-09

B7N-211D0-00-00

Protectors placed on either side of the CP3 engine to limit accidental damage to the engine as much as possible.

- High-level protection with 3-point fixation
- stylish brushed-aluminium accent piece
- Easy installation - no need for extra stays
- Smooth integration - on naked unit layout.





## STAY SOFT SIDE BAGS MT09 2024

BME-FSSBS-00-00

Dedicated brackets required to hold the optional Yamaha soft side bags.

- Can be easily mounted and the tubes are removable thanks to its smartly designed quick-lock system
- Lightweight design
- Easy mounting and removal.



## SOFT SIDE BAGS

YME-SSBAG-00-10

Soft side bags - semi hard lids - Reflective grey piping.

- Flips over the passenger's seat and attaches to the stays
- Bags attach firmly thanks to strong Velcro closure strips
- Volume: 14L - expandable to 21L - per bag
- Features the Yamaha logo
- Includes hand carry grip
- Waterproof inner bag is also included



## REAR CARRIER KIT

BME-248D0-00-00

High quality finished carrier can be mounted to the rear of the unit, to carry a topcase or other luggage.

- Lightweight and compact design that matches the agile body image.
- Mounting holes are prepared in the unit, and it can be easily mounted without additional work.
- An additional mount plate is required to attach the top case.



## TOP CASE MOUNTING PLATE-E

BME-284X0-00-00

Base mounting plate for Yamaha top cases.



## TOP CASE 34L

BBW-F840E-01-00

Standard Top Case 34L (Base).

- Colour plates required for finishing the top case
- Top case capacity 34L, can fit 1 full face helmet or 2 most sizes jet helmets
- Prepared for matching unit key lock system
- Optional back rest available
- Optional Inner bag available
- Optional smoke reflectors available.



## USB BRACKET MT09 2024

BME-FUSBB-R0-00

USB mounting bracket that fits neatly in the MT09 cockpit. Ideal for mounting a USB charger to always have your phone or navigation charged up as you ride.

- Fitting in MT09 cockpit
- Vibration resistant support for USB adapter.



## USB-A CHARGER

B5U-H6600-11-00

USB-A 5Volt outlet kit for pre-wired units.

- Waterproof to IP64 with mount B4T-H7253-00.
- 2.4Amp for charging smartphone and similar devices.
- With moisture proof connector for direct plug&play mounting
- Protected against overcharge, high voltage, short circuit and high temperature.
- Smart detect Apple and Android phones
- 75cm cable with strain relief and connector for pre-wired



## USB ADAPTER MOUNTING RUBBER

BEA-H21K0-00-00

Rubber mount for USB adapter with cap.

- Dedicated holder for genuine Yamaha USB adapter
- Rubber USB mount with cap providing up to IP64 moisture protection



## USB-C RUBBER HOUSING

BAT-H7253-00-00

Rubber mount for USB-C adapter with cap

- Dedicated holder for genuine Yamaha USB-C adapter
- Rubber USB mount with cap providing up to IP64 moisture protection
- Select the correct bracket for dedicated fitment on your Yamaha.



## BILLET CRANKCASE PROTECTOR

B7N-FCRCP-10-00 (right)

B7N-FCRCP-00-00 (left)

Gives you possibility to charge your phone. For USB-C type connectors

- High quality bronze-coloured finish
- Features the MT logo
- Meets national and international technical race regulations by Gilles.Tooling
- Matching Billet R/H Crankcase Protector separately available.



## BILLET HANDLEBAR ENDS

B7N-FHBED-00-00

- Latest closed capping design (no visible center screw)
- Fully functional - same weight as OE for damping
- Compatible with optional "Style accent rings"



## TANK BAG RING CITY,SPORT,TOUR

xxx-xxxxx-xx-xx

Kit that enables you to mount one of the optional Tank Bags to your Yamaha for extra luggage capacity

- Quick Lock function Attach with 1 click
- Magnets guide the bag ring into the appropriate position
- Mechanical locking mechanism secures the bag



## TANK BAG SPORT

YME-FTBAG-SP-02

New smaller tank bag to allow small luggage carrying while enhancing sporty look specific for more sporty driving position.

- Yamaha branded
- Includes rain cover
- Magnetic quick lock system allows quick and easy mounting
- MOLLE attachment made of stable hypalon material on the top
- Robust carrying handle



## TANK BAG URBAN

YME-FTBAG-CT-02

Next generation medium size tank bag perfect for the use in the city or short trips

- Features the Yamaha logo
- Magnetic quick lock system allows quick and easy mounting
- Hand carry grip incorporated in the front
- Volume expandable by zipper from 11 to 14 liters
- MOLLE attachment made of stable hypalon material on the top
- Mesh compartments in the interior



## SPROCKET COVER CP3 ENGINE

B7N-FFSPC-00-00

Accessory billet sprocket cover for units with CP3 engine

- CNC machined for reduced weight and fine design
- Open sprocket view
- With engraved YAMAHA logo
- With engraved Gilles Tooling "GG" logo



## TIRE PRESSURE MONITORING KIT

YME-HTPMK-00-00

Tire Pressure Monitoring System. Electronic wheel sensors giving the tire pressure to a display via a Bluetooth connection.

- Warning when the pressure is too low or too high
- High temperature alarm value: +80C/+176F
- Internal sensors for front and rear wheel
- Waterproof and dustproof display
- Battery life >5 years
- Includes 8,3 & 11,5mm Diameter valves.





## CENTRE TANK PAD

B7N-FTPAD-01-00

- Rubberized texture for maximum protection
- 3D Sporty design with YAMAHA logo
- Great to combine with the optional matching Side Grip Pads
- 3M VHB adhesive



## SUSPENSION LOWERING LINK

B5U-F538P-10-00

Lowering link for rear suspension.

- Adjusting the seat height by lowering the suspension
- 18mm on Tracer9
- 16mm on XSR900
- Includes original needle bearings and seals pre-mounted
- Strong billet aluminium linkage
- Note; mounting a lowering kit will limit banking angles



## MT SERIES BRAKE / CLUTCH LEVER BLACK

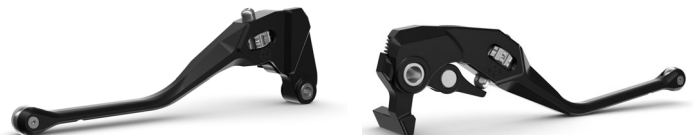
B7N-RFFBL-00-00

BRAKE

B7N-RFFCL-00-00

CLUTCH

- Optimal shape for all grip styles
- Ideal lever length for perfect control
- Up to 35 times adjustable
- Adjuster wheel and colour accent packs for lever end available in 4 colours. Sold separately (Grey included)
- Laser engraved YAMAHA and Gilles Tooling logos
- Customizable to match other accessory items and your YAMAHA



## COLOUR ACCENT PACK FOR LEVER END

YME-FCRLV-00-00

SILVER

YME-FCRLV-00-01

BLUE

YME-FCRLV-00-02

RED

YME-FCRLV-00-03

BLACK

Kit contents are for a complete set of TWO levers. Contains Adjust wheel and Colour accent pack for lever end

- Coordinate your Gilles levers with your Yamaha and other accessories.



## BRAKE FLUID CONTAINER KIT

B7N-FBFLC-00-00

Stylish black Aluminium Brake Fluid Container cap and jacket

- CNC milled aluminum
- Compatible with optional colour accent rings for customization
- Very easily and quickly installed for immediate impact
- Contains lid and jacket



## CHAIN ADJUSTER

B7N-FCHAD-00-00

- Precise and easy chain tension adjustment
- Simplifies wheel exchange
- Blocks stay in swingarm while axle is removed
- Laser Gilles and MT logo



## PADDOCK STAND ADAPTER

B7N-FPDCK-00-00 SILVER  
B7N-FPDCK-00-01 BLUE  
B7N-FPDCK-00-02 RED  
B7N-FPDCK-00-03 GREY

- Smart integrated and concealed rolling mechanism
- Light weight rolling paddock stand adaptor to ease bike lift
- Gilles Tooling logo
- Durable POM material



## CENTRE YOKE NUT MT09

B7N-FYNUT-00-00

Billet CNC-machined yoke nut for MT-09

- CNC machined for light-weight
- With engraved Gilles-Tooling "GG" logo
- Includes optional plastic plug for covering steering-shaft



## BILLET OIL FILLER CAP

B7N-F0ILF-00-00

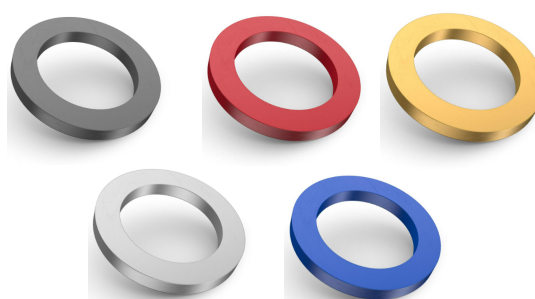
- CNC machined design with Gilles Tooling logo laser engraving
- Compatible with optional colour accent rings for customization
- Easy to mount with standard tool (included)



## STYLE ACCENT RINGS

YME-FCRNG-00-00	GREY
YME-FCRNG-00-01	SILVER
YME-FCRNG-00-02	RED
YME-FCRNG-00-00	BLUE
YME-FCRNG-00-04	GOLD

- Coordinate your Gilles accessories with your Yamaha
- Multiple colours available
- Set of 2 pieces
- **Once fitted, cannot be taken out!!**

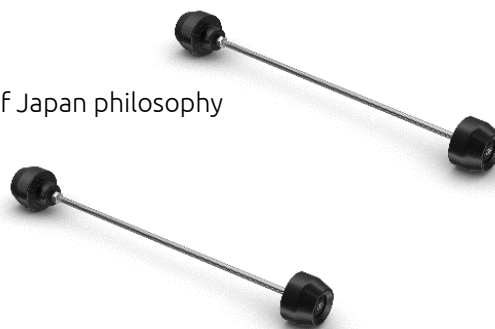


## AXLE PROTECTOR

B7N-FRAXP-00-00	REAR
B7N-FFAXP-00-00	FRONT

Axle protector with modern design -inspired by The Dark Side of Japan philosophy

- Rear axle covers in sporty design
- Impact body fully made of CNC machined POM
- Segment structure with center aluminium part
- Compatible with optional colour accent rings



## LEVERGUARD SET

B7N-HGBLK-00-00

Give your MT-09 a sporty look with the functional and good-looking lever guards

- Cast aluminium and machined construction.
- Stylish and exclusive enhancement for your MT-09



## FOOT PEG

B7N-FRPEG-00-00

RIDER

B7N-FPPEG-00-00

PASSENGER

- Change OEM feet pegs for sportier feel and appearance
- With coloured end plug
- Customize and match to your unit with optional colour parts



## COLOUR PLUGS

B7N-FPGCP-00-00

SILVER

B7N-FPGCP-00-01

BLUE

B7N-FPGCP-00-02

RED

- Customize your Foot pegs to your taste
- Coordinate with other accessories



## REAR MASTER CYLINDER COVER

B67-FBFLC-00-00

- CNC machined aluminum for finest design
- with engraved Gilles Tooling "GG" logo
- Includes 3 anodized color inserts (silver, red and blue)



## SIDE SLIDER SPARE

B7N-211D0-A0-00

LEFT

B7N-211D0-B0-00

RIGHT

Spare part of kit B7N211D00000.

COMING  
SOON

Produktänderungen, Liefermöglichkeiten und Irrtümer vorbehalten.  
Sous réserve de modifications, capacités de livraison et d'erreurs.

\*Yamaha Original Zubehör bei Ihrem Yamaha Vertragspartner erhältlich  
Accessoires d'origine Yamaha disponibles auprès de votre partenaire Yamaha