

YAMAHA ACCESSORIES FJR 1300 A/AS



11.07.2018



12V DC OUTLET KIT

1MC-12VDC-00-00

CHF 59.–

Extra outlet suitable to charge your electronic equipment such as mobile phone or MP3 player.

- Install close to the FJR handlebars for easy access
- Maximum load: 3A (for both the standard and extra FJR 12V outlet)



TANK PAD FJR

1MC-TANKP-AD-00

CHF 45.–

Stylish protective pad exclusively designed for the FJR fuel tank.

- Features the FJR and the Yamaha tuning fork logo



COMFORT SEAT FJR - RIDER

1MC-F47C0-80-00 (*Rider*)

CHF 289.–

Exclusively designed, stylish dual seat - replacing the original - providing extra sitting comfort for both rider and passenger on those very, very long-distance journeys.

- Features embroidered FJR logo on passenger seat
- Rider and passenger seat need to be ordered separately

COMFORT SEAT FJR - PASSENGER

1MC-F47E0-80-00 (*Passenger*)

CHF 195.–

FJR 1300 A/AS

FJR1300 AKRAPOVIC MY16 SLIP ON EXHAUST

90798-33500-00

CHF 2'100.–

Enhance the design of your Yamaha!

- Fully street legal - EU4 compliant
- Features exclusively laser-engraved logo
- Sophisticated design enhances the looks of your Yamaha
- Creates an exciting sound
- Catalytic converter incorporated into exhaust body



only for Model Year 2016

INNER BAG SIDE CASES CITY (SET)

1MC-INBAG-SC-00

CHF 119.–

High-quality fitting FJR bags for Sides Cases Touring and Side Cases City.

- Exclusively designed and developed for the standard delivered touring side cases
- Features classy FJR logo
- Incorporates an inner pocket and an outer pocket
- Double zip-fastener for main compartment



Technical specifications

Height: 320 mm
 Width: 360 mm
 Length: 440 mm

FJR TOURING TANK BAG 06-

1MC-TANKB-TR-00

CHF 165.–

Large and practical bag for extra luggage capacity.

- Specifically designed for the FJR tank
- Ideal for on long-distance touring journeys
- Quick and easy detachable with 3-click-on system possible thanks to non-scratching tank bag mount base
- Tank bag mount base allows easy access to tank refuel lid
- Transparent top holder for a tablet or a map
- Incorporated embossed FJR logo
- Self-snatching zips for a noise free tour
- Handy document holder separately included
- Rain cover also included



Technical specifications

Height: 320 mm
 Width: 360 mm
 Length: 440 mm



SMX
 VDOM1
 YNM5
 DRMK
 DNMN

Midnight Black
 Magnetic Bronze
 Frosted Blade
 Lava Red
 Tech Graphite

39L TOP CASE

5JW-W0754-80-01	(SMX)	CHF 690.–
1MC-F0754-91-10	(VDOM1)	CHF 690.–
1MC-F0754-91-20	(YNM5)	CHF 690.–
1MC-F0754-91-30	(DRMK)	CHF 690.–
1MC-F0754-91-40	(DNMN)	CHF 690.–

Top case for extra luggage/storage capacity on your Yamaha, especially when touring long-distance.

- Combine it with the optional Top Cases Touring Passenger Backrest to keep your passenger comfortable
- Rubber protectors for a minimum of damages to the top case
- Available in matt black and unit-matching colours
- 4-point lid locking
- Includes internal luggage straps



TOP CASE MOUNTING PLATE `06-

5VS-W0720-21-00

CHF 135.–

Required kit to mount the optional available 39L Top Case Touring to your Yamaha.

*Für alle 39 liter Top Case, ab Jahrgang 2006.
 Pour tous les Top Case 39 litres dès 2006.*



BACKREST SET FOR TOPCASE

5JW-W0772-00-00

CHF 185.–

Backrest for the optional available 39L and 50L Top Case Touring.

- Specifically designed and developed for the Top Cases Touring
- Gives added comfort to your passenger





FJR 1300 A/AS

50L TOP CASE

1MC-F84A8-00-00	(SMX)	CHF 625.–
1MC-F84A8-10-00	(VDOM1)	CHF 625.–
1MC-F84A8-20-00	(YNM5)	CHF 625.–
1MC-F84A8-30-00	(DNMN)	CHF 625.–
1MC-F84A8-40-00	(DRMK)	CHF 625.–
1MC-F84A8-50-00	(MS1)	CHF 625.–
1MC-F84A8-60-00	(DPBMU)	CHF 625.–

Large high-quality top case for extra luggage/ storage capacity and specifically designed for long-distance journeys.

- EU-registered design
- Can hold two modular or full face helmets or your riding gear
- Chrome protector on outside
- Embossed Yamaha logo
- Features rubber feet to keep the top case stable when put in upright position on the ground
- Combine it with the optional available 50L Top Case Touring Inner Bag and 50L Top Case Touring Passenger Backrest and comfort is all yours!



SMX	Midnight Black
VDOM1	Magnetic Bronze
YNM5	Frosted Blade
DNMN	Tech Graphite
DRMK	Lava Red
MS1	Matt Silver
DPBMU	Ocean Depth

Hinweis: Das 50 l Topcase „Touring“ ist ein eigenständiges Produkt. Verwenden Sie es nicht zusammen mit den optional erhältlichen Yamaha-Seitenkoffern.

Remarque : le top-case Touring de 50 litres doit être utilisé seul ; il n'est pas recommandé de l'installer ni de l'utiliser avec les valises latérales.

REAR CARRIER

1MC-248D0-00-00 Silver Tech - Rear

CHF 245.–

High quality finished carrier to be mounted to the rear of the unit, to carry a topcase or other luggage.

- Thanks to the integrated design you can fit the optional Yamaha 50L Top Case Touring directly for additional luggage capacity
- With integrated passenger hand grip

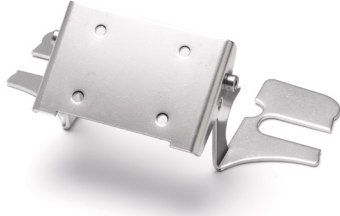


Passend für alle 50 liter Top Case, nur für Jahrgang 2015-2016.
 Pour tous les Top-Case 50 litres dès années 2015-2016

GPS MOUNT STAY KIT

1MC-GPSMT-00-10

CHF 59.–


Base to hold a GPS device.

- Specifically developed to hold a Garmin Zumo660 and Zumo350LM
- To be installed on the top yoke near the speedometer for convenient visibility for the rider
- Mount of GPS base onto the GPS stay is easy and simple
- Features GPS mounting angle tilt adjustment

KNUCKLE VISOR SET

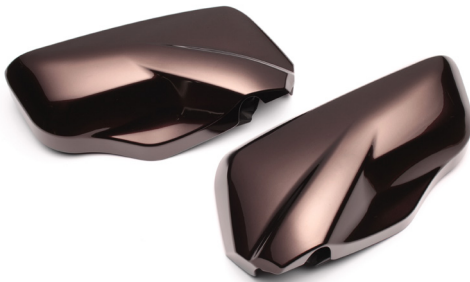
1MC-F61C0-00-00 (SMX) CHF 245.–

1MC-F61C0-10-00 (VDM1) CHF 245.–

1MC-F61C0-20-00 (YNM5) CHF 245.–

1MC-F61C0-30-00 (DRMK) CHF 245.–

1MC-F61C0-40-00 (DNMN) CHF 245.–


Mirror mounted wind deflectors provide extra comfort on long-distance journeys.

- GK designed and YEC engineered especially for the FJR models to protect your hands from (cold) wind
- Long-distance rides become extra comfortable when used in combination with the optional FJR high screen
- Available in unit-matching colour
- Sold per set

 SMX
 VDM1
 YNM5
 DRMK
 DNMN

 Midnight Black
 Magnetic Bronze
 Frosted Blade
 Lava Red
 Tech Graphite

HIGH SCREEN

1MC-F83J0-00-00

CHF 285.–


Higher screen than the standard version for even more wind protection when riding.

- Particularly handy on long-distance journeys
- 103mm higher than standard wind screen
- Features FJR logo

FJR 1300 A/AS

FOOT SHIELDS

1MC-283S0-10-00	(SMX)	CHF 249.–
1MC-283S0-20-00	(VDOM1)	CHF 249.–
1MC-283S0-30-00	(YNM5)	CHF 249.–
1MC-283S0-41-00	(DRMK)	CHF 249.–
1MC-283S0-51-00	(DNMN)	CHF 249.–
1MC-283S0-61-00	(MS1)	CHF 249.–

Wind deflectors for your feet, providing extra comfort and wind protection on long-distance journeys.

- GK designed and YEC engineered specifically for the FJR
- Has no influence on the banking angle of the unit
- Integrates nicely with the optional available FJR's Frame Sliders
- Available in unit-matching colours
- Sold per set



SMX
VDOM1
YNM5
DRMK
DNMN
MS1

Midnight Black
Magnetic Bronze
Frosted Blade
Lava Red
Tech Graphite
Matt Silver

FRAME SLIDERS

1MC-211D0-00-00

CHF 319.–

Protectors placed on either side of the FJR to prevent accidental damage to the side cowlings, crankcase frame and frame parts as much as possible.

- Has no influence on the banking angle of the unit
- Integrates nicely with the optional available FJR foot shields
- Features FJR logo on the side
- High quality





FJR 1300 A/AS

INDOOR COVER

C13-IN101-10-0L (Large)

CHF 149.–

C13-IN101-10-0M (Medium)

CHF 149.–

Cover to keep your Yamaha in top-class condition when stored away in your garage.

- Keeps your Yamaha free from dust
- Features the Yamaha logo on both sides
- Large-sized cover is suitable for big models like for example the Super Ténéré, FJR models, TMAX, etc.
- Medium cover is suitable for medium-sized models such as the R-Series, FZ-series, 125-250cc scooters, etc.
- Storage bag for cover included



OUTDOOR COVER

C13-UT101-10-0L (Large)

CHF 165.–

C13-UT101-10-0M (Medium)

CHF 165.–

Cover to keep your Yamaha in top condition when parked outside.

- Protects your Yamaha against the elements such as rain, snow, etc.
- Features the Yamaha logo on both sides
- Transparent plastic window at rear for registration number plate check
- Large-sized cover is suitable for big models like for example the Super Ténéré, FJR models, TMAX, etc.
- Medium cover is suitable for medium-sized models such as the R-Series, FZ-series, 125-250cc scooters, etc.
- Storage bag for cover included



Die Listenpreise sind Preisempfehlungen des Herstellers/Importeurs.

Sie verstehen sich inkl. der gesetzlichen Mehrwertsteuer.

Produktänderungen und Liefermöglichkeiten vorbehalten. Irrtümer und Preisänderungen vorbehalten.

Vorhergehende Preislisten verlieren ihre Gültigkeit.

Les prix figurant sur la liste sont les prix recommandés par le fabricant / l'importateur.

Ils s'entendent TVA comprise.

Sous réserve de modifications des produits et des capacités de livraison.

Sous réserve d'erreurs et de modifications des prix. Les anciennes listes des prix ne sont plus applicables.



Hostettler AG
CH - 6210 Sursee
Tel.: 041 / 926 61 11
Fax: 041 / 926 63 28
E-Mail: info@yamaha-motor.ch