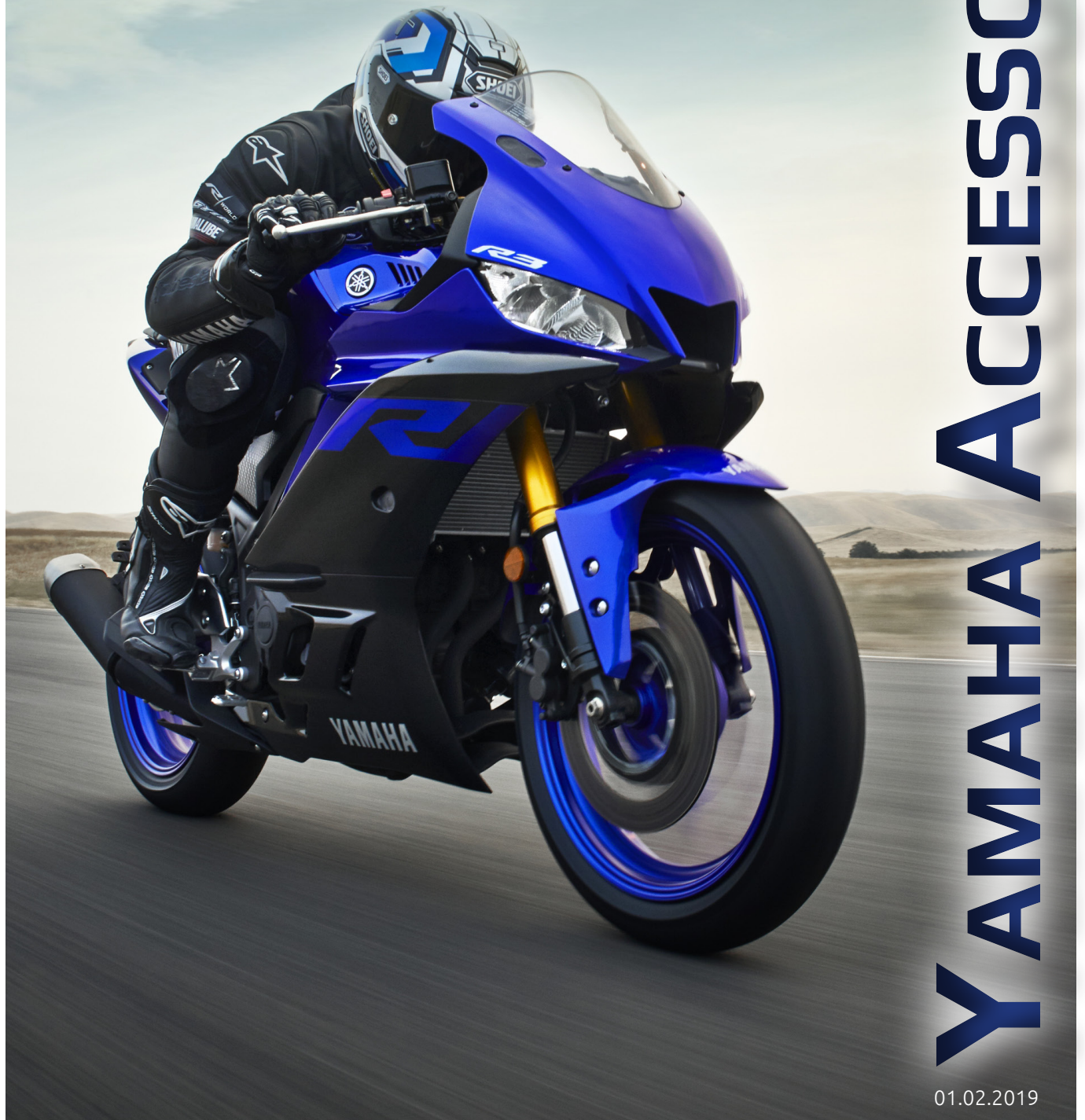


# YZF-R3



# YAMAHA ACCESSORIES

01.02.2019



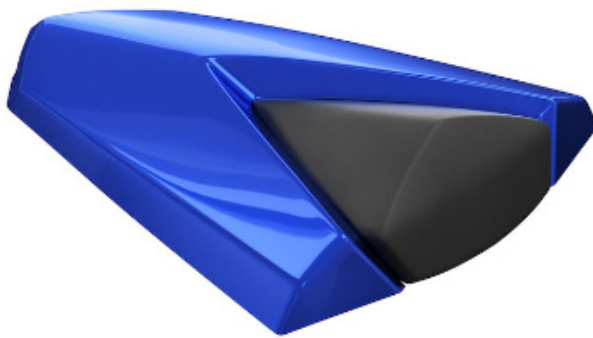
### YZF-R3 ENDURANCE SCREEN

BS7-F83J0-00-00

CHF 109.–

**This double bubble windscreen is higher than the standard version. It provides increased wind protection while reducing fatigue during long-distance high-speed riding.**

- Gives your bike an ultimate race look
- Provides improved wind protection when riding
- Features the YZF-R logo
- High impact resistant material
- WVTA approved



### YZF-R3 SEAT COVER

1WD-F47F0-00-00    **DPBMC**    CHF 189.–

1WD-F47F0-10-00    **SMX/VRC1**    CHF 189.–

**Race-inspired stylish rear seat cover to provide a more solo race-look.**

- Effortless integration
- Available in unit-matching colours
- Easy to install
- Features the Yamaha turning fork logo
- The aerodynamic design matches the YZF-R3 perfectly



### YZF-R3 SIDE SLIDERS

BS7-F11D0-00-00

CHF 175.–

**Discrete, yet functional, chassis protection in case of a fall. Made to fit the engine and chassis layout. These plastic resin side sliders also provide an added look of toughness to your YZF-R3.**

- Durable and scratch-resistant
- Features the YZF-R logo

### YZF-R3 - LPH

BS7-FLPH0-00-00

CHF 159.–

**Stylish licence plate holder to replace the original.**

- Includes LED licence plate light
- Supports the standard flashers and the optional available LED flashers
- Includes bracket for original reflector
- Adds extra style to your Yamaha



### YZF-R3 CHAIN GUARD

BS7-FCHPR-00-00

CHF 109.–

**Exclusive and high quality finished chain guard, replacing the original.**

- Matt black colour powder coated
- High-quality aluminium finish
- Features the R3 logo
- Enhances the looks of your Yamaha



### YZF-R3/MT-03 (EU4) SLIP-ON CARBON

90798-32904-00

CHF 815.–

**Street legal (EU4) carbon slip-on**

- High quality, stainless steel with carbon outershield
- Sophisticated design enhances the looks of your Yamaha
- Features exclusive MT-03 and R3 logo decals
- Creates an exciting sound
- Fully street legal (EU4)









YAMAHA YZF-R3



### LED BLINKER FRONT PLUS

YME-FLB2F-10-00

CHF 119.–



**Stylish front flashers with unique integrated position light.**

- High quality material and finish
- Fully E-homologated
- Include flashers speed regulating resistor
- Can be combined with the optional LED Flashers Plus Rear
- More safety on the road thanks to position light
- Sold per set of two
- Unique design by GK Design specially for Yamaha
- Include black and silver plates to finish the styling of your Yamaha to your liking
- Include quick mounting connectors

### LED BLINKER REAR PLUS

YME-FLB2R-10-00

CHF 119.–



**Stylish rear flashers with unique integrated position light.**

- Can be combined with the optional LED Flashers Plus Front
- Fully E-homologated
- High quality materials and finish
- Include flashers speed regulating resistor
- More safety on the road thanks to position light
- Sold per set of two
- Include integrated brake lights as well
- Unique design by GK Design specially for Yamaha
- Include black and silver plates to finish the styling of your Yamaha to your liking
- Include quick mounting connectors

## YAMAHA YZF-R3

### SIDE STAND EXTENSION

B04-FSTEX-00-00

CHF 79.-

**Kit that enables to extend the base of the original side stand**

- Extra convenient when using the optional available Yamaha Soft Side Bags
- High quality finish enhances the looks of your Yamaha
- Provides extra support surface for stable parking

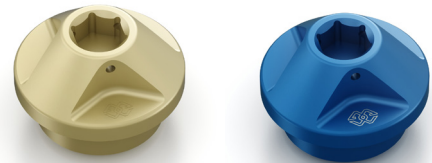


### OIL FILLER CAP

1WS-F1536-00-00	<b>TITAN</b>	CHF 75.-
1WS-F1536-10-00	<b>BLUE</b>	CHF 75.-

**Custom oil filler cap - replacing the original - for an extra stylish touch to your Yamaha.**

- Compliments the optional available billet anodised aluminium accessories in the line-up
- Available in titanium-coloured, red or blue anodised finish
- By Gilles.Tooling



### LED FLASHERS

YME-H0789-00-10	<b>BLACK</b>	CHF 65.-
YME-H0789-20-10	<b>CARBON</b>	CHF 65.-

**Stylish flashers to replace the standard flashers**

- 9 LEDs per blinker
- Includes blinker speed regulating resistor
- Sold per set of two
- Unique design by GK Design specially for Yamaha
- 55cm long wire with shrink sleeve




**RIDER FOOTRESTS**

1WS-F2741-00-00	<b>BLACK-TITAN</b>	CHF 115.-
1WS-F2741-10-00	<b>BLACK-BLUE</b>	CHF 115.-

**Machined from billet aluminum, our custom rider foot pegs are a bolt-on, lightweight and high-strength replacement for the standard pegs.**

- Coordinate well with the other optional billet aluminium components in the genuine Yamaha accessories line-up
- With titanium-coloured or blue detailing
- By Gilles.Tooling
- Easy installation


**PASSENGER FOOTRESTS**

1WS-F2743-00-00	<b>BLACK-TITAN</b>	CHF 115.-
1WS-F2743-10-00	<b>BLACK-BLUE</b>	CHF 115.-
1WS-F2743-20-00	<b>BLACK-SILVER</b>	CHF 115.-
1WS-F2743-30-00	<b>BLACK-RED</b>	CHF 115.-

**Machined from billet aluminum, our custom passenger foot pegs are a bolt-on, lightweight, and high-strength replacement for the standard passenger pegs.**

- With titanium-coloured, silver, red or blue detailing
- By Gilles.Tooling
- Sold per set of two
- Easy installation
- Compliments the optional available billet anodised aluminium accessories in the genuine Yamaha accessories line-up





YAMAHA YZF-R3



### TANK BAG-SPORT

YME-FTBAG-SP-00

CHF 119.–



**Functional and sturdy-looking tank bag with innovative quick-lock system; small and handy when you require extra luggage capacity on short trips.**

- Volume: 5L - expandable to 9L
- Small and sporty design allows for more flexibility in riding positions
- Tank bag quick-lock system allows quick and easy mounting/removal; especially handy when unit has to be refueled
- Includes hand carry grip at the front
- Yamaha branded
- Map holder
- Includes rain cover

### REAR-SEAT BAG

YME-REARB-AG-00

CHF 209.–



**Functional, flexible and sturdy-looking soft bag with handy and easy buckle fitting system for placement on the rear seat.**

- Ideal solution when you require sufficient luggage capacity
- Volume: 24L - expandable to 36L
- Side compartments for small belongings
- Even more ideal when used in combination of the optional model-dedicated luggage rack or rear carrier - if available - so that you bring your partner along the ride.
- Includes hand carry grip at the front
- Can be carried as back pack thanks to associated straps
- Yamaha branded
- Easy fit - easy remove buckle system allows fitment on the rear seat of most motorcycles
- Includes rain cover

## YAMAHA YZF-R3

### TANK BAG RING

2CR-FTBRG-00

CHF 49.-

**Kit that enables you to mount one of the optional Tank Bags on your Yamaha for extra luggage capacity.**

- Package includes the Tank Bag Mount Ring to fix or remove the tank bags with ease on/from your bike



### PIT MAT HQ 200X100

YME-ENVIR-HQ-00 **BLACK** CHF 145.-  
 YME-ENVIR-HQ-01 **BLUE** CHF 145.-

**The Race Pit Mat is perfect for the garage, outdoors, or in the pits at the track to provide superior footing.**

- Rubber backing
- FIM approved
- Waterproof
- Min. 1 liter oil absorption



### REAR RACING STAND

YMD-20020-41-00

CHF 155.-

**High-quality paddock-style rear racing stand. Provides stable parking condition for your YZF-R3 enhancing racer looks**

- Paddock-style type racing stand
- High quality glossy-red painted steel tube frame
- YAMAHA logo sticker enhancing genuine feeling of product
- POM hook holders for light setting operation
- Extensively tested and approved on specific YZF-R3
- Recommended to use with optional REAR STAND HOOKS, YMD-20025-00-00 (Silver), YMD-20025-10-00 (Blue), YMD-20025-20-00 (Red) and YMD-20025-30-00 (Gold)
- Made in EU





**Die Listenpreise sind Preisempfehlungen des Herstellers/Importeurs.**

Die Preise sind für den Handel unverbindlich. Sie verstehen sich inkl. der gesetzlichen Mehrwertsteuer. Produktänderungen und Liefermöglichkeiten vorbehalten. Irrtümer und Preisänderungen vorbehalten. Vorhergehende Preislisten verlieren ihre Gültigkeit.

**Les prix figurant sur la liste sont les prix recommandés par le fabricant / l'importateur.**

*Les prix ne sont pas obligatoires pour le commerce. Ils s'entendent TVA comprise.*

*Sous réserve de modifications des produits et des capacités de livraison.*

*Sous réserve d'erreurs et de modifications des prix. Les anciennes listes des prix ne sont plus applicables.*



Hostettler AG  
CH - 6210 Sursee  
Tel.: 041 / 926 61 11  
Fax: 041 / 926 63 28  
E-Mail: [info@yamaha-motor.ch](mailto:info@yamaha-motor.ch)