

Model year: 2008-2012



Article number:

59C-248D0-00-00	Black	CHF 179.-
59C-248D0-10-00	Silver	CHF 179.-

Rear Carrier TMAX

Carrier to be mounted on the rear of the unit

- Integrated design to fit the optional Yamaha 39L or 50L top case for extra luggage capacity. The top cases fit directly to the rear carrier without the need of a mounting plate
- Lightweight and durable construction
- Easy to install
- Available in matt black and silver

Specifications

Material	Coated die-cast aluminium
Certified conformity (CE/TÜV/WVTA)	N/A
Mounting hardware	Not required. Mounting instructions included in package
Suitable for	From MY2008 onwards
Does not fit with	The optional black and silver Backrest Stay TMAX



Article number:

34B-F84A8-10-00	Matt Black	CHF 245.-
34B-F84A8-1A-00	Aluminium-coloured	CHF 245.-
34B-F84A8-1B-00	Midnight Black (SMX)	CHF 245.-
34B-F84A8-1C-00	Lava Red (RM5)	Auslauf / pas du tout livrable
34B-F84A8-1D-00	Moon Shadow (NMJ)	Auslauf / pas du tout livrable
34B-F84A8-1E-00	Tech Bronze (MDYNM3)	CHF 245.-
34B-F84A8-1F-00	Tech Armor (MDNM3)	CHF 245.-
34B-F84A8-1G-00	Sonic Grey (MDNM1)	CHF 245.-
34B-F84A8-1H-00	Magnetic Blue (MDBM1)	Auslauf / pas du tout livrable
34B-F84A8-1J-00	High Tech Silver (HTS)	CHF 245.-
34B-F84A8-1K-00	Frozen Titanium (MYNM1)	CHF 245.-
34B-F84A8-1L-00	Competition White (BWC1)	CHF 245.-
52S-21780-09-00	Lock Set Standard	CHF 19.-
59C-281C0-00-00	Lock Set Single Key Operation	CHF 29.-

50L Top Case

Quality top case for extra luggage/storage capacity on your Yamaha

- Exclusively designed for Yamaha Motor by ELM Design Europe
- Easy to install and remove from your Yamaha
- Can hold two (full face) helmets or riding gear
- Available standard in Matt Black. Possibility, though, to change the colour of the lid's side panels to one that either matches your Yamaha or to a contrasting colour. The coloured lids can be ordered with the top case as one or separately. See the available colours for the lid also separately
- Solid & durable double shell construction
- Can be locked and for added convenience even with a single key operation system

Please note – the Top Case is a stand-alone product and it is not recommended that it is installed and used with the available Yamaha Side Cases

Specifications

Material	Injected PP (body & lid) / Injected PMMA (reflectors)
Certified conformity (CE/TÜV/WVTA)	N/A
Mounting hardware	Not required for some models. Other models require the model-dedicated rear carrier and the universal mounting plate. The Majesty 400 requires additionally the model-specific Mounting Plate Adaptor Kit. Please check the online Yamaha Top Case application chart what is required for your Yamaha
Suitable for	Most Yamaha scooters and motorcycles



Coloured Lid Side Panels 50L Top Case

Range of coloured lid side panels for Yamaha's 50L top case, to exchange with the standard version

- Choose a colour that matches their Yamaha or alternatively choose a contrasting colour of your own choice
- Easy to install

Article number:

34B-F843F-00-00	Matt Black	CHF 105.-
34B-F843F-0A-00	Aluminium-coloured	CHF 115.-
34B-F843F-0B-00	Midnight Black (SMX)	CHF 115.-
34B-F843F-0C-00	Lava Red (RM5)	<i>Auslauf / pas du tout livrable</i>
34B-F843F-0D-00	<i>Moon Shadow (NMJ)</i>	CHF 115.-
34B-F843F-0E-00	Tech Bronze (MDYNM3)	CHF 115.-
34B-F843F-0F-00	Tech Armor (MDNM3)	CHF 115.-
34B-F843F-0G-00	Sonic Grey (MDNM1)	CHF 115.-
34B-F843F-0H-00	Magnetic Blue (MDBM1)	CHF 115.-
34B-F843F-0J-00	High Tech Silver (HTS)	CHF 115.-
34B-F843F-0K-00	Frozen Titanium (MYNM1)	CHF 115.-
34B-F843F-0L-00	Competition White (BWC1)	CHF 115.-

Specifications

Material	Injected ABS
Certified conformity (CE/TÜV/WVTA)	N/A
Mounting hardware	Not required
Suitable for	The Yamaha 50L Top Case



Passenger Backrest 50L Top Case

Backrest to fit to the front side of the optional Yamaha 50L Top Case

- Gives added comfort to your passenger
- Easy installation to the top case

Article number:

37P-F84U0-B0-00	CHF 59.-
-----------------	----------

Specifications

Material	Polyurethane
Certified conformity (CE/TÜV/WVTA)	N/A
Mounting hardware	Included in package
Suitable for	The Yamaha 50L Top Case



Inner Bag 50L Top Case

Fitting bag to put inside the optional Yamaha 50L Top Case

- Allows easy loading and unloading of your luggage from the top case
- Includes hand strap to carry around with ease

Article number:

YME-BAG50-00-00	CHF 65.-
-----------------	----------

Specifications

Material	Polyester
Certified conformity (CE/TÜV/WVTA)	N/A
Suitable for	Yamaha 50L Top Case



39L Top Case

Quality top case for extra luggage/storage capacity on your Yamaha

- Exclusively designed for Yamaha Motor by ELM Design Europe
- Easy to install and remove from your Yamaha
- Can hold a (full face) helmet or riding gear
- Available standard in Matt Black. Possibility, though, to change the colour of the lid to one that either matches your Yamaha or to a contrasting colour. See the available colours for the lid separately. A number of coloured lids can be ordered with the top case as one or separately
- Solid & durable double shell construction
- Can be locked and for added convenience even with a single key operation system

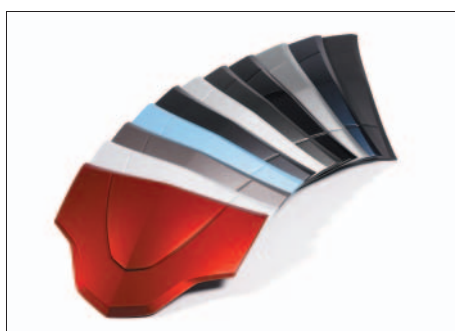
Please note – the Top Case is a stand-alone product and it is not recommended that it is installed and used with the available Yamaha Side Cases

Article number:

52S-F84A8-00-00	Matt Black	CHF 195.-
52S-F84A8-A0-00	Midnight Black (SMX)	CHF 215.-
52S-F84A8-B0-00	Avalance White (WM1)	CHF 215.-
52S-F84A8-C0-00	London Grey (DNMM)	CHF 215.-
52S-F84A8-J0-00	Competition White (BWC1)	CHF 215.-
52S-21780-09-00	Lock Set Standard	CHF 19.-
59C-281C0-00-00	Lock Set Single Key Operation	CHF 29.-

Specifications

Material	Injected PP (body & lid) / Injected PMMA (reflectors)
Certified conformity (CE/TÜV/VWTA)	N/A
Mounting hardware	Not required for some models. Other models require the model-dedicated rear carrier and the universal mounting plate. The Majesty 400 requires additionally the model-specific Mounting Plate Adaptor Kit. Please check the online Yamaha Top Case application chart what is required for your Yamaha
Suitable for	Most Yamaha scooters and motorcycles



Coloured Lid Panels 39L Top Case

Range of coloured lid panels for Yamaha's 39L top case, to exchange with the standard version

- Choose a colour that matches your Yamaha or alternatively choose a contrasting colour of your own choice
- Easy to install

Article number:

52S-F842M-00-00	Matt Black	CHF 27.-
52S-F842M-A0-00	Midnight Black (SMX)	CHF 49.-
52S-F842M-B0-00	Avalance White (WM1)	CHF 49.-
52S-F842M-C0-00	London Grey (DNMM)	CHF 49.-
52S-F842M-D0-00	Sky Blue (DBM8)	CHF 49.-
52S-F842M-E0-00	Lava Red (RMS)	CHF 49.-
34B-F842M-0F-00	Tech Armor (MDNM3)	CHF 49.-
52S-F842M-G0-00	Magnetic Blue (MDBM1)	CHF 49.-
34B-F842M-0H-00	Frozen Titanium (MYNM1)	CHF 49.-
52S-F842M-J0-00	Competition White (BWC1)	CHF 49.-
52S-F842M-L0-00	Aluminium-coloured	CHF 49.-

Specifications

Material	Injected ABS
Certified conformity (CE/TÜV/VWTA)	N/A
Mounting hardware	Not required
Suitable for	The Yamaha 39L Top Case



Passenger Backrest 39L Top Case

Backrest to fit to the front side of the optional Yamaha 39L Top Case

- Gives added comfort to your passenger
- Easy installation to the top case

Article number:

37P-F84U0-A0-00	CHF 59.-
-----------------	----------

Specifications

Material	Polyurethane
Certified conformity (CE/TÜV/VWTA)	N/A
Mounting hardware	Included in package
Suitable for	The Yamaha 39L Top Case
Does not fit with	The Yamaha 39L Top Case Touring



Inner Bag 39L Top Case

Fitting bag to put inside the optional Yamaha 39L Top Case

- Allows easy loading and unloading of your luggage from the top case
- Includes hand strap to carry around with ease

Article number:

YME-BAG39-00-00

CHF 49.-

Specifications

Material	Polyester
Certified conformity (CE/TÜV/WVTA)	N/A
Does not fit with	The Yamaha 39L Top Case Touring



Lock Set 39L/50L Top Cases

1-piece lock set to close off the Yamaha 39L/50L Top Case

- For added convenience, option with a single key operation for a number of models available. See online application chart for which models this is applicable

Article number:

52S-21780-09-00 Lock Set Standard CHF 19.-

59C-281C0-00-00 Lock Set Single Key Operation CHF 29.-

Specifications

Material	Zinc alloy/brass
Certified conformity (CE/TÜV/WVTA)	N/A
Mounting hardware	Included in package
Suitable for	The Yamaha 39L and 50L Top Case
Does not fit with	The Yamaha 39L Top Case Touring



Passenger Backrest Stay TMAX

Base for back support for your passenger

- Creates together with the optional Backrest Stay Pads TMAX extra comfort for your passenger
- Integrated design with the optional Backrest Stay Pad TMAX
- Strong and durable construction
- Easy to install
- Available in matt black and silver

Article number:

59C-284U0-00-00 Matt Black CHF 135.-

59C-284U0-10-00 Silver CHF 135.-

59C-284B0-00-00 Pad Black CHF 98.-

59C-284B0-10-00 Pad Titanium-coloured CHF 98.-

Specifications

Material	Die-cast aluminium
Certified conformity (CE/TÜV/WVTA)	N/A
Mounting hardware	Not required. Mounting instructions included in package
Does not fit with	The optional Rear Carriers TMAX



Passenger Backrest Stay Pad TMAX

Pad for passenger backrest base

- Creates together with the optional Backrest Stay TMAX extra comfort for your passenger
- Same high quality material and finish as the TMAX standard seat
- Integrated design with the optional TMAX backrest stay
- Features engraved TMAX logo on the back of the backrest pad
- Easy to install
- Available in two colour variations

Article number:

59C-284B0-00-00 Pad Black CHF 98.-

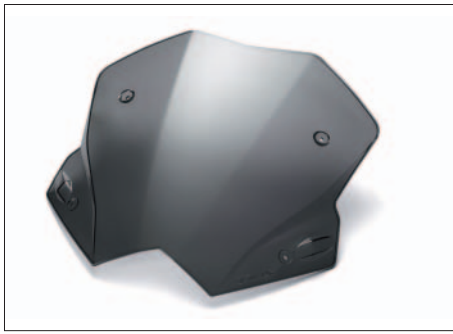
59C-284B0-10-00 Pad Titanium-coloured CHF 98.-

59C-284U0-00-00 Backrest Stay Matt Black CHF 135.-

59C-284U0-10-00 Backrest Stay Silver CHF 135.-

Specifications

Material	Seat skin over polyurethane foam
Certified conformity (CE/TÜV/WVTA)	N/A
Mounting hardware	Not required. Mounting instructions included in package



Sport Screen TMAX

Smoked screen for a sporty looking TMAX

- Offers wind protection as well
- Features embossed TMAX logo
- Strong and high impact resistant
- Easy to install

Article number:

59C-283J0-00-00

CHF 109.-

Specifications

Material	Smoked, 3.5mm polycarbonate
Certified conformity (CE/TÜV/WVTA)	WVTA-approved
Mounting hardware	Not required. Mounting instructions included in package



Licence Plate Holder TMAX

Stylish license plate holder to replace the original

- Adds extra style to your TMAX
- Features TMAX logo in red - matches nicely with the optional Engine Cover TMAX (article nr. 59C-F5499-00-00)
- Includes LED license plate light
- Includes bracket for original reflector

Article number:

59C-F16E0-00-00

CHF 125.-

Specifications

Material	Black anodized aluminium
Certified conformity (CE/TÜV/WVTA)	CE-approved (for license plate light)
Mounting hardware	Included in package (brackets for licence plate light and standard reflector)



Billet Engine Cover TMAX

Cover to replace the original engine cover for an extra stylish TMAX

- High quality design
- Two-coloured (black and blank) anodisation made possible thanks to unique process
- Features TMAX logo in red
- Fits on both sides of the TMAX
- Comes with stainless steel bolts
- Sold per piece

Article number:

59C-F5499-00-00

CHF 125.-

Specifications

Material	Black and blank anodized billet aluminium
Certified conformity (CE/TÜV/WVTA)	N/A
Mounting hardware	Included in package



Foot Panels TMAX

Quality foot panels for an added stylish look

- Unique stylish design that matches the TMAX perfectly
- High quality look and feel
- Features engraved TMAX logo
- With rubber pads
- Sold per set

Article number:

59C-274M0-00-00

CHF 90.-

Specifications

Material	Blank anodized aluminium
Certified conformity (CE/TÜV/WVTA)	N/A
Mounting hardware	Not required. Mounting instructions included in package



Design Seat TMAX

Exclusively designed seat to replace the original, offering added comfort

- For extra style and added comfort
- Features embossed TMAX logo on both side
- Same high quality material as the TMAX standard seat and with nice detailed red stitched finish

Article number:

59C-247C0-00-00

CHF 407.-

Specifications

Material	Seat skin over polyurethane foam
Certified conformity (CE/TÜV/WVTA)	N/A
Mounting hardware	Not required. Mounting instructions included in package



Apron TMAX

Water-resistant cover to keep the rider as warm and dry as possible during rainy and cold weather conditions

- Rigorously tested with Yamaha's own Stability System
- Designed for easy mounting, easy usage and durability
- Created with the input from the engineers and designers behind the TMAX themselves
- Easy key entry, water-resistant pocket
- Tailored cover for the seat
- Soft, fleece-style inner lining, providing insulation for the colder months

Article number:

59C-TMAPR-00-00

CHF 164.-

Specifications

Material	Water-resistant fabric
Certified conformity (CE/TÜV/WVTA)	N/A
Mounting hardware	Not required. Mounting instructions included in package



Belt Cover TMAX

Cover to replace the original black belt cover for added style

- Accentuates the boomerang lines of the TMAX on the side for an extra stylish look
- Available in two colour variations

Article number:

59C-223A0-00-00 Sonic Grey (MDNM1) CHF 53.-

59C-223A0-10-00 Tech Bronze (MDYNM3) CHF 53.-

Specifications

Material	Painted injected PP
Certified conformity (CE/TÜV/WVTA)	N/A
Mounting hardware	Not required. Mounting instructions included in package



GPS Stay TMAX

Base to hold a GPS device

- Specifically developed to hold a Tom Tom Rider or a Garmin Zumo
- GPS stay can be installed near the speedo meter for convenient visibility for the rider
- GPS cable easy to connect to your scooter, as your TMAX is pre-wired
- Easy to install

Please note – the GPS as depicted on the image does not come with the stay

Article number:

59C-234A0-00-10

CHF 82.-

Specifications

Material	4,5mm metal, black coated
Certified conformity (CE/TÜV/WVTA)	N/A
Mounting hardware	Not required. Mounting instructions included in package
Does not fit with	The optional Grip Heater SC 120 (article nr. YME-W0792-10-00)



12V DC Socket

Device to charge your electronic equipment such as mobile phone or MP3 player

- Easy to install: Genuine Yamaha plug matches the pre-wiring of your scooter
- Max. load 1 Amp (as shown on the included warning sticker)
- Fused to avoid damage to your scooter in case of a short circuit
- For convenience the socket is installed in the glove compartment which can be locked

Article number:

59C-8254B-00-00

CHF 35.-

Specifications

Certified conformity (CE/TÜV/WVTA)	N/A
Mounting hardware	N/A. Mounting instructions included in package
Suitable for	TMAX, TMAX variations and their ABS versions
Does not fit with	Optional Gripheater SC 120 (article nr. YME-W0792-10-00) as same connector is used



Grip Heater SC 120

Grips with heater to replace standard unit grips

- Ensures warm hands when riding in cold weather conditions
- Includes temperature control button
- Auto-shut function conserves battery life
- Switch bracket included
- Grip length 120 mm

Article number:

YME-W0792-10-00

Auslauf / pas du tout livrable

Specifications

Certified conformity (CE/TÜV/WVTA)	N/A
Mounting hardware	Included in package
Suitable for	All TMAX and TMAX variations as from MY2008, Majesty 400 as from MY2004 and their ABS-versions
Does not fit with	Optional 12 DC Socket as available for various Yamaha scooters and the optional TMAX GPS Stay (article nr. 59C-234A0-00-00)



Console Bag

Bag for additional luggage storage; placed between seat and leg shield

- 18L volume
- Water repellent
- Can hold one jet helmet
- Includes two inner pockets to store your valuables
- Fully padded to protect your belongings

Article number:

4B5-W0750-00-00

CHF 89.-

Specifications

Certified conformity (CE/TÜV/WVTA)	N/A
Suitable for	All TMAX, TMAX variations and X-MAX 125/250



Saddle Cover

Cover to put over your scooter's saddle

- Protects your saddle against sun, rain and dirt when parked
- Made from extra durable material
- Features the Yamaha tuning-fork logo

Article number:

5GJ-W0702-00-00

CHF 29.-

Specifications

Material	Nylon
Certified conformity (CE/TÜV/WVTA)	N/A
Suitable for	General fit for most Yamaha scooters



Article number:

YME-YEC50-EU-00 EU-plug CHF 115.-

YEC-40 Battery Charger

Charger that can charge the battery of your Yamaha motorcycle, scooter, ATV, SMB and/or marine products

- Contains unique battery charging technology. Fully automatic switch mode charger that analyses the state of the battery, charges and automatically switches to maintenance charging when ready
- Designed for safety: spark-free, protected from reverse polarity connections and short-circuit proof
- Light and compact; handy and easy to store
- Specially tested and approved by Yamaha service engineers to fit our range of motorcycles, scooters, ATV, SMB and other products
- Patented method for desulphation; extends life of the battery
- Also separately available: 1) indicator plug with long cable and "traffic-light" style battery indicator
2) built-in panel plug with extra long cable to mount in the dashboard of your Yamaha
3) Indicator panel 150, a combination of the indicator plug and built-in panel plug with long cable

Specifications

Type	8 step, fully automatic switch model with pulse maintenance
Dimensions	168 x 65 x 38 mm
Weight	0,6 kg
Certified conformity (CE/TÜV/WVTA)	CE-approved
Battery charge capacity	1.2-90 Ah



Article number:

YME-YEC09-EU-00 EU-plug CHF 65.-

YEC-8 Battery Charger

Charger that can charge the battery of your Yamaha motorcycle, scooter, ATV, SMB and/or Marine products

- Contains unique battery charging technology. Fully automatic switch mode charger that analyses the state of the battery, charges and automatically switches to maintenance charging when ready
- Designed for safety: spark-free, protected from reverse polarity connections and short-circuit proof
- Light and compact; handy and easy to store
- Specially tested and approved by Yamaha service engineers to fit our range of motorcycles, scooters, ATV, SMB and other products
- Patented method for desulphation; extends life of the battery
- Also separately available: 1) indicator plug with long cable and "traffic-light" style battery indicator
2) built-in panel plug with extra long cable to mount in the dashboard of your Yamaha
3) Indicator panel 150, a combination of the indicator plug and built-in panel plug with long cable

Specifications

Type	4 step, fully automatic switch model with pulse maintenance
Dimensions	140 x 50 x 38 mm
Weight	0,6 kg
Certified conformity (CE/TÜV/WVTA)	CE-approved
Battery charge capacity	1.2-32Ah



Article number:

YME-YECIP-15-00 CHF 29.-

YEC Indicator Panel 150

Combines a battery charger built-in plug and a battery charge indicator into one

- Connects to the battery chargers YEC-8 and YEC-40
- Allows a neat, solid connection point rather than a flying lead connection
- 'Traffic light' style LED indication: green, orange, red
- 1.5 m extra long cable to allow installation of connector to almost anywhere on your bike
- Rubber grommet to keep dirt out of connector
- Equipped with an inline fuse for extra safety

Specifications

Dimensions	42 x 23 x 55 mm
Weight	~100 gr
Certified conformity (CE/TÜV/WVTA)	N/A
Mounting hardware	Not required. Instructions for use included in package



Article number:

YME-YECA-15-00 CHF 15.-

YEC Battery Charger Built-in Panel Plug

Smart and easy plug for connection from panel mount socket at the dashboard to the YEC-8 or YEC-40 battery chargers

- Allows a neat, solid connection point rather than a flying lead connection
- 1.5 m extra long cable to allow installation of connector to almost anywhere on your bike
- Rubber grommet to keep dirt out of connector
- Equipped with an inline fuse for extra safety

Specifications

Dimensions	42 x 23 x 55 mm
Weight	~100 gr
Certified conformity (CE/TÜV/WVTA)	N/A
Mounting hardware	Not required. Instructions for use included in package



YEC Battery Charger Indicator

Gives instant and clear indication of the charge condition of your vehicle's battery

- Connects to the battery chargers YEC-8 and YEC-40
- 'Traffic light' style LED indication: green, orange, red
- 0.5 m long cable
- Rubber grommet to keep dirt out of connector
- Equipped with an inline fuse for extra safety

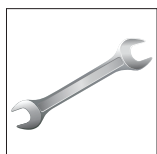
Article number:

YME-YECPL-05-00

CHF 16.-

Specifications

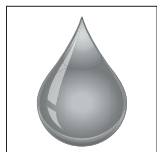
Dimensions	55 x 20 x 15 mm
Weight	~80 gr
Certified conformity (CE/TÜV/WVTA)	N/A
Mounting hardware	Not required. Instructions for use included in package



The Yamaha Chain of Quality

Yamaha technicians are fully trained and equipped to offer the best service and advice for your Yamaha product. For this reason, Yamaha strongly recommends visiting an official Yamaha dealer for all your service requirements. Yamaha Genuine Parts & Accessories are especially developed, designed and tested for our Yamaha product range. Yamaha also recommends the use of Yamalube® our own range of high-tech lubricants, the lifeblood of Yamaha engines. They are developed to carry on working effectively, no matter where you ride. Besides functional and style accessories, Yamaha offers a range of high quality, innovative riding gear designed to keep you comfortable and protected, both on- and off-road. An extensive range of casual wear is also available.

For more information go to: www.yamaha-motor-acc.com



Always wear a helmet, eye protection and protective clothing when riding any type of powered vehicle. Yamaha encourages you to ride safely and respect fellow riders and the environment. All information in this brochure/catalogue is given for general guidance. Specifications and appearance of Yamaha products and non Yamaha branded products are subject to change without prior notice. Non Yamaha branded products as depicted in this brochure/catalogue are fully developed and produced by respected third parties. Yamaha does not guarantee the availability of the displayed products in local markets. The product range may be limited in some countries and Yamaha has the right to discontinue products without prior notice. Where applicable, prices of Yamaha products may vary according to local requirements and conditions but no rights can be obtained from these prices and information. Sizes of the apparel displayed are indicative – Yamaha recommends you to visit your local Yamaha dealer for the best fit. For further details and availability, please contact your local Yamaha dealer.