

# ACCESSORIES

# TRICITY



02.02.2018



### TRICITY HIGH SCREEN

BB8-F83J0-00-00

CHF 209.-

#### High screen for better wind protection

- Offers additional wind protection
- Integrated Tricity logo
- Strong polycarbonate screen

für Modell 2017 / pour modèle 2017



### TRICITY HIGH SCREEN

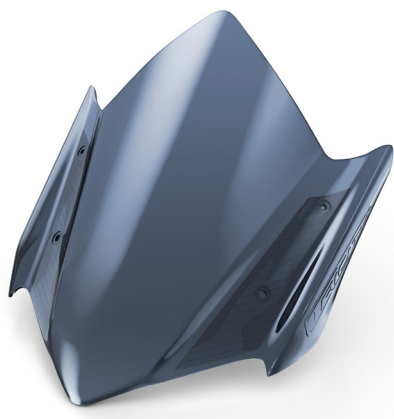
2CM-F83J0-01-00

CHF 249.-

#### High screen for improved wind protection when riding

- Designed specifically for the Tricity
- Features the Tricity logo
- Offers additional wind protection
- Strong polycarbonate screen

für Modell 2016 / pour modèle 2016



### TRICITY METER VISOR

2CM-F61C0-00-00

CHF 85.-

#### Short, high quality smoked screen that provides a sporty look.

- Durable and strong material
- With integrated Tricity logo

für Modell 2016-2017 / pour modèle 2016-2017

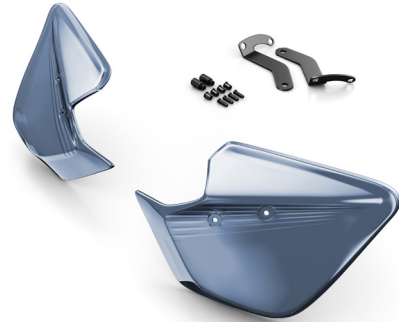
**TRICITY KNUCKLE VISORS**

2CM-F85F0-00-00

CHF 85.–

**Stylish protectors for your hands against wind and rain.**

- Provides additional riding comfort, particularly when combined with the optional Tricity Windscreen
- Or, combine them with the optional Tricity Sports Screen, giving a sporty look to your Tricity. Made of strong and durable material
- Supplied a a set of 2



für Modell 2016-2017 / pour modèle 2016-2017

**TRICITY GPS STAY**

2CM-F34A0-00-00

CHF 49.–

**Base to hold a GPS device.**

- Can hold most GPS mount systems
- To be installed near the speedometer for convenient visibility for the rider
- Easy mount of GPS base onto stay



für Modell 2016-2017 / pour modèle 2016-2017



### BACKREST CUSHION



1SD-F843F-00-00	<b>BLACK-GOLD</b>	CHF 69.–
1SD-F843F-10-00	<b>BLACK-BLUE</b>	CHF 69.–
1SD-F843F-20-00	<b>BLACK-RED</b>	CHF 69.–
1SD-F843F-30-00	<b>BLACK</b>	CHF 69.–
1SD-F843F-40-00	<b>BLACK-GREY</b>	CHF 69.–

#### Cushion for the X-MAX' Passenger Backrest Stay.

- When combined with the optional Passenger Backrest Stay X-MAX, offers additional comfort for your passenger
- Option to match the cushion to either the standard seat or the optional design seat

für Modell 2016-2017 / pour modèle 2016-2017

### TRICITY BACK REST BASE



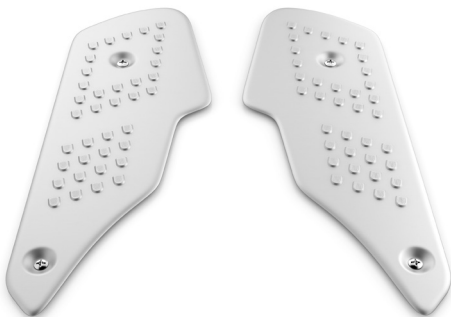
2CM-F84U0-00-00	CHF 135.–
-----------------	-----------

#### Base for back support for your passenger, providing a comfortable ride.

- When combined with one of the optional Passenger Backrest Cushions, this provides extra comfort for your passenger. Choose the Passenger Backrest Cushion design that fits the styling of your Tricity.
- Complimentary design
- High quality finish

für Modell 2016-2017 / pour modèle 2016-2017

### TRICITY FOOT BOARD



2CM-F74M0-00-00	CHF 79.–
-----------------	----------

#### High quality aluminium foot panels for an added, stylish look.

- With integrated anti-slip surface
- Durable construction
- Unique design compliments the looks of your Yamaha
- Supplied as a set of 2

für Modell 2016-2017 / pour modèle 2016-2017

**TRICITY REAR CARRIER**

2CM-F4841-A0-00

CHF 119.–

**Carrier designed to carry a topcase or other luggage.**

- Includes integrated mounting plate to enable direct fitment of an optional Yamaha Top Case for additional luggage capacity
- *Nicht für 50L Top-Case / ne pas pour top-case 50 litre*

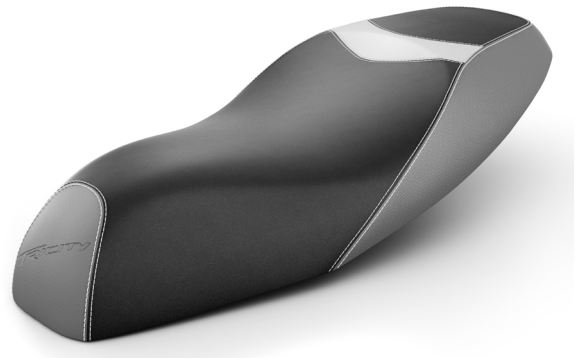
*für Modell 2016-2017 / pour modèle 2016-2017***TRICITY COMFORT DESIGN SEAT**

2CM-F47C0-00-00

CHF 299.–

**Exclusively designed stylish seat to replace the original, offering added comfort on long-distance rides.**

- Puts the finishing touch to the styling of your Yamaha
- Features engraved Tricity logo
- Combine it with the optional Passenger Backrest Base and the one of the choice of optional Passenger Backrest Cushions for total comfort for both you and your passenger

*für Modell 2016-2017 / pour modèle 2016-2017***BACKREST FOR 39L TOP CASE**

37P-F84U0-A0-00

CHF 59.–

**Backrest to fit to the optional 39L top case.**

- Gives added comfort to your passenger
- Easy installation to the top case

*für Modell 2016-2017 / pour modèle 2016-2017*



### INNER BAG TOP CASE 39L

YME-BAG39-00-00

CHF 49.–

**Fitted soft bag to put inside the optional Yamaha 39L Top Case.**

- Allows for easy loading and unloading of your luggage from the top case
- Includes hand strap for easy carrying

für Modell 2016-2017 / pour modèle 2016-2017



### CONSOLE BAG

4B5-W0750-00-00

CHF 89.–

**Bag for additional luggage storage; placed between seat and leg shield.**

- Can hold one helmet
- Includes two inner pockets to store your valuables
- Fully padded to protect your belongings
- Volume: 18L
- Water repellent

für Modell 2016-2017 / pour modèle 2016-2017



### TRICITY APRON

2CM-F47L0-00-00

CHF 155.–

**Cover to keep you as warm and dry as possible during rainy and cold weather conditions.**

- Layered system keeps you warm and protected
- Easy key entry
- Water-resistant
- With anti-theft cable
- Features reflective Tricity logo
- Resistent against UV for maximum 3 years
- During nicer weather conditions, the cover can be conveniently and easy folded against the footboard of the unit thanks to the additional straps
- With convenient storage bag

für Modell 2016-2017 / pour modèle 2016-2017

**39L TOP CASE**

52S-F84A8-00-00	<b>BLACK TEXTURE</b>	CHF 195.-
52S-F84A8-A0-00	<b>SMX</b>	CHF 215.-
52S-F84A8-J0-00	<b>BWC1</b>	CHF 215.-

**Quality top case for extra luggage/storage capacity on your Yamaha.**

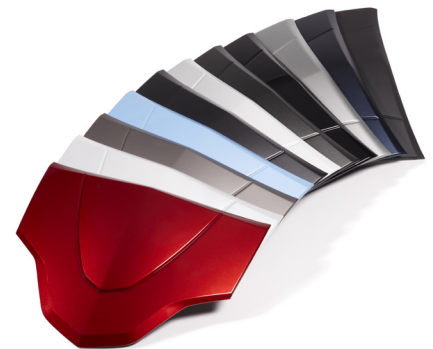
- Exclusively designed for Yamaha Motor by ELM Design Europe
- Can hold a (full face) helmet or riding gear
- Available in Matt Black case with lid panel in a fixed number of unit matching colours
- Whenever desired, you can swap the lid panel into a colour of your choice
- Combine it with the 39L Top Case Inner Bag and 39L Top Case Passenger Backrest and comfort is all yours



für Modell 2016-2017 / pour modèle 2016-2017

**COLOUR TOP COVER 39L**

52S-F842M-00-00	<b>BLACK</b>	CHF 27.00
52S-F842M-A0-00	<b>SMX (Midnight Black)</b>	CHF 49.00
52S-F842M-B0-00	<b>WM1 (Avalanche White)</b>	CHF 49.00
52S-F842M-C0-00	<b>DNMM (London Grey)</b>	CHF 49.00
52S-F842M-D0-00	<b>DBM8 (Sky Blue)</b>	CHF 49.00
52S-F842M-E0-00	<b>RM5 (Lava Red)</b>	CHF 49.00
34B-F842M-0F-00	<b>MDNM3 (Tech Armor)</b>	CHF 49.00
52S-F842M-G0-00	<b>MDBM1 (Magnetic Blue)</b>	CHF 49.00
52S-F842M-H0-00	<b>MYNM1 (Frozen Titanium)</b>	CHF 49.00
52S-F842M-J0-00	<b>BWC1 (Competition White)</b>	CHF 49.00
52S-F842M-K0-00	<b>MATT BLACK</b>	CHF 27.00
52S-F842M-L0-00	<b>ALUMINIUM</b>	CHF 49.00
52S-F842M-N0-00	<b>MNM2 (gray anthracite)</b>	CHF 49.00
52S-F842M-P0-00	<b>MNM3 (gray matt)</b>	CHF 49.00
52S-F842M-Q0-00	<b>MWM3 (white)</b>	CHF 49.00
52S-F842M-R0-00	<b>DBNM8 (Anthrazit)</b>	CHF 49.00
52S-F842M-S0-00	<b>MDRM3 (Red)</b>	CHF 49.00



für Modell 2016-2017 / pour modèle 2016-2017

**Die Listenpreise sind Preisempfehlungen des Herstellers/Importeurs.**

Die Preise sind für den Handel unverbindlich. Sie verstehen sich inkl. der gesetzlichen Mehrwertsteuer. Produktänderungen und Liefermöglichkeiten vorbehalten. Irrtümer und Preisänderungen vorbehalten. Vorhergehende Preislisten verlieren ihre Gültigkeit.

**Les prix figurant sur la liste sont les prix recommandés par le fabricant / l'importateur.**

*Les prix ne sont pas obligatoires pour le commerce. Ils s'entendent TVA comprise.*

*Sous réserve de modifications des produits et des capacités de livraison.*

*Sous réserve d'erreurs et de modifications des prix. Les anciennes listes des prix ne sont plus applicables.*



Hostettler AG  
CH - 6210 Sursee  
Tel.: 041 / 926 61 11  
Fax: 041 / 926 63 28  
E-Mail: [info@yamaha-motor.ch](mailto:info@yamaha-motor.ch)