



YAMAHA

TECHNICAL GARMENTS

21.09.2018

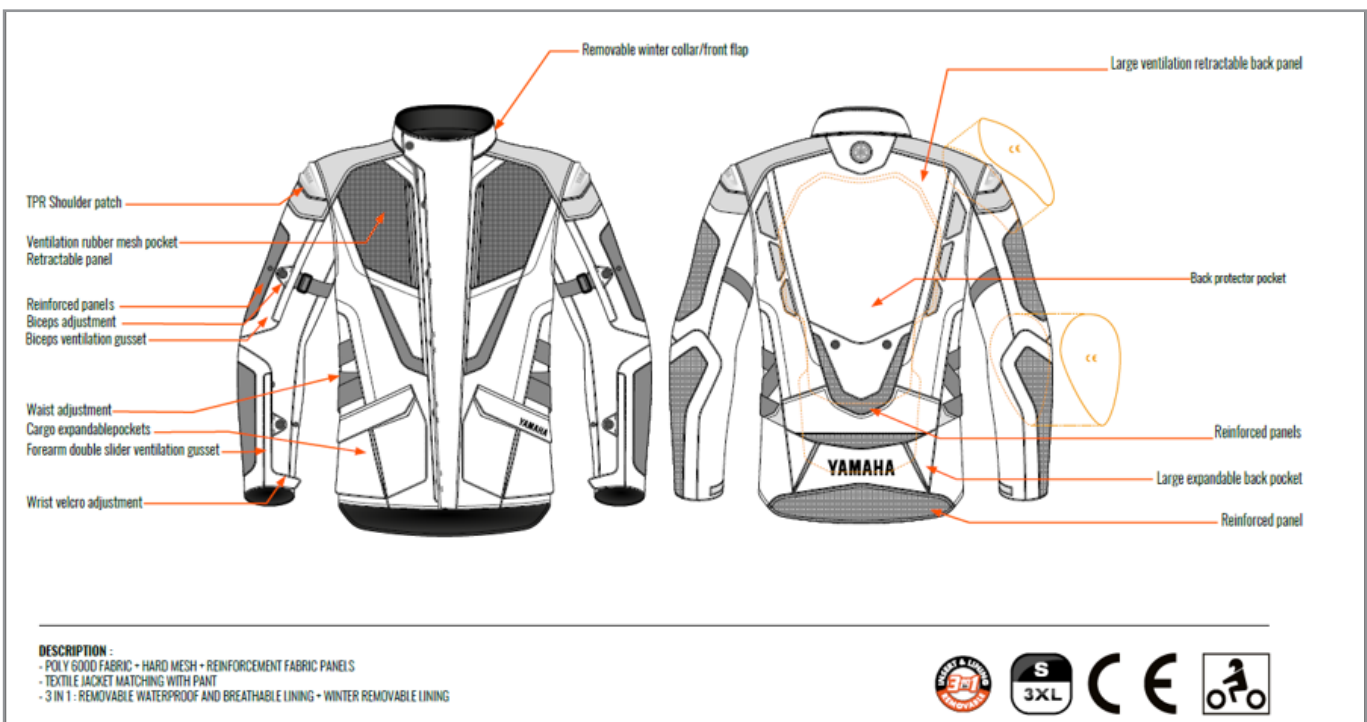


YAMAHA ADVENTURE MALE JACKET

- POLY 6000 FABRIC + HARD MESH + REINFORCEMENT FABRIC PANELS
- TEXTILE JACKET MATCHING WITH PANT
- 3 IN 1: REMOVABLE WATERPROOF AND BREATHABLE LINING + WINTER REMOVABLE LINING

Part Nr: **A18-BJ101-B0-xx**
 Sizes: 0S / 0M / 0L / 1L / 2L / 3L

Price: CHF 389.–

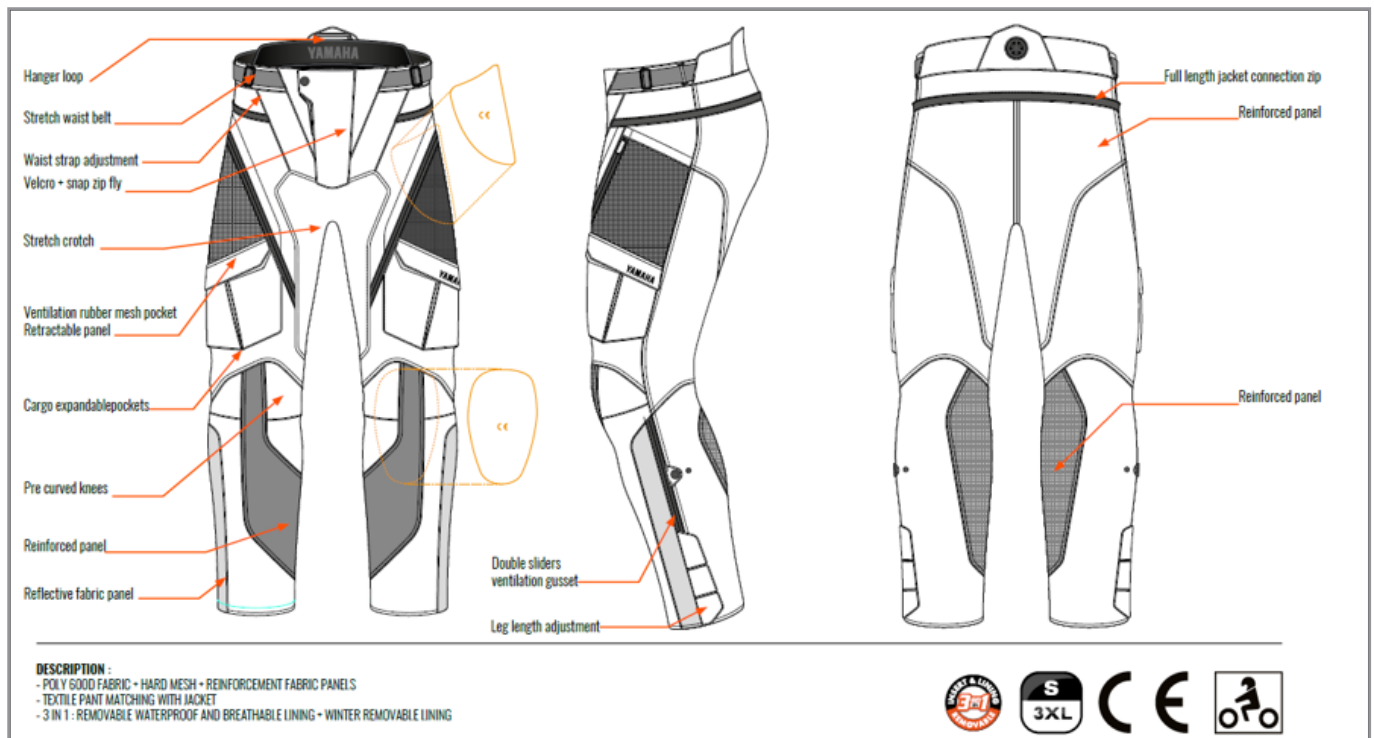


YAMAHA ADVENTURE MALE PANTS

- POLY 6000 FABRIC + HARD MESH + REINFORCEMENT FABRIC PANELS
- TEXTILE JACKET MATCHING WITH JACKET
- 3 IN 1: REMOVABLE WATERPROOF AND BREATHABLE LINING + WINTER REMOVABLE LINING

Part Nr: **A18-BP101-B0-xx**
 Sizes: 0S / 0M / 0L / 1L / 2L / 3L

Price: CHF 275.-

DESCRIPTION
 - POLY 6000 FABRIC + HARD MESH + REINFORCEMENT FABRIC PANELS
 - TEXTILE PANT MATCHING WITH JACKET
 - 3 IN 1: REMOVABLE WATERPROOF AND BREATHABLE LINING + WINTER REMOVABLE LINING

Callouts:
 - Hanger loop
 - Stretch waist belt
 - Waist strap adjustment
 - Velcro + snap zip fly
 - Stretch crotch
 - Ventilation rubber mesh pocket
 - Retractable panel
 - Cargo expandable pockets
 - Pre curved knees
 - Reinforced panel
 - Reflective fabric panel
 - Double sliders ventilation gusset
 - Leg length adjustment
 - Full length jacket connection zip
 - Reinforced panel
 - Reinforced panel

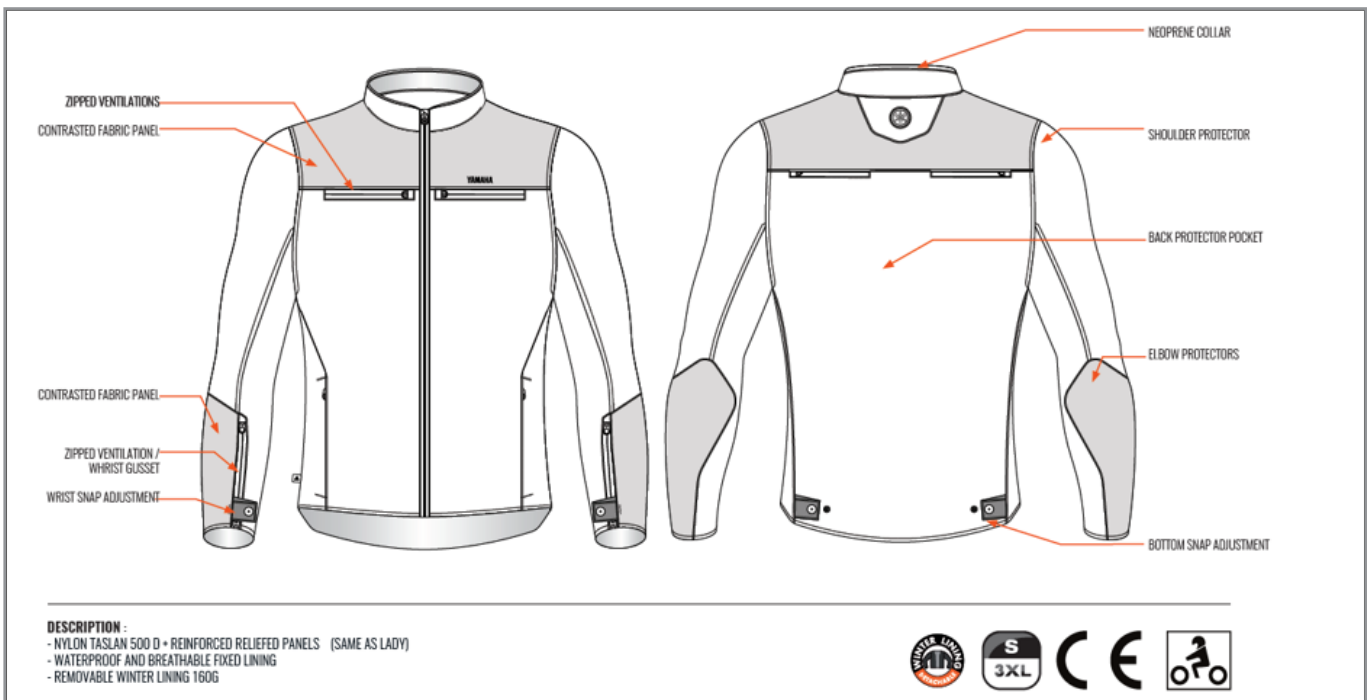
Logos:
 - 5 Star PROOF
 - S 3XL
 - CE
 - CE
 - Motorcycle icon



**YAMAHA URBAN SHORT RIDING JACKET
MALE**

- NYLON TASLAN 500 D + REINFORCED RELIEVED PANELS (SAME AS LADY)
- WATERPROOF AND BREATHABLE FIXED LINING
- REMOVABLE WINTER LINING 160G

Part Nr: **A18-VJ114-B0-xx**
 Sizes: 0S / 0M / 0L / 1L / 2L / 3L
 Price: CHF 265.–

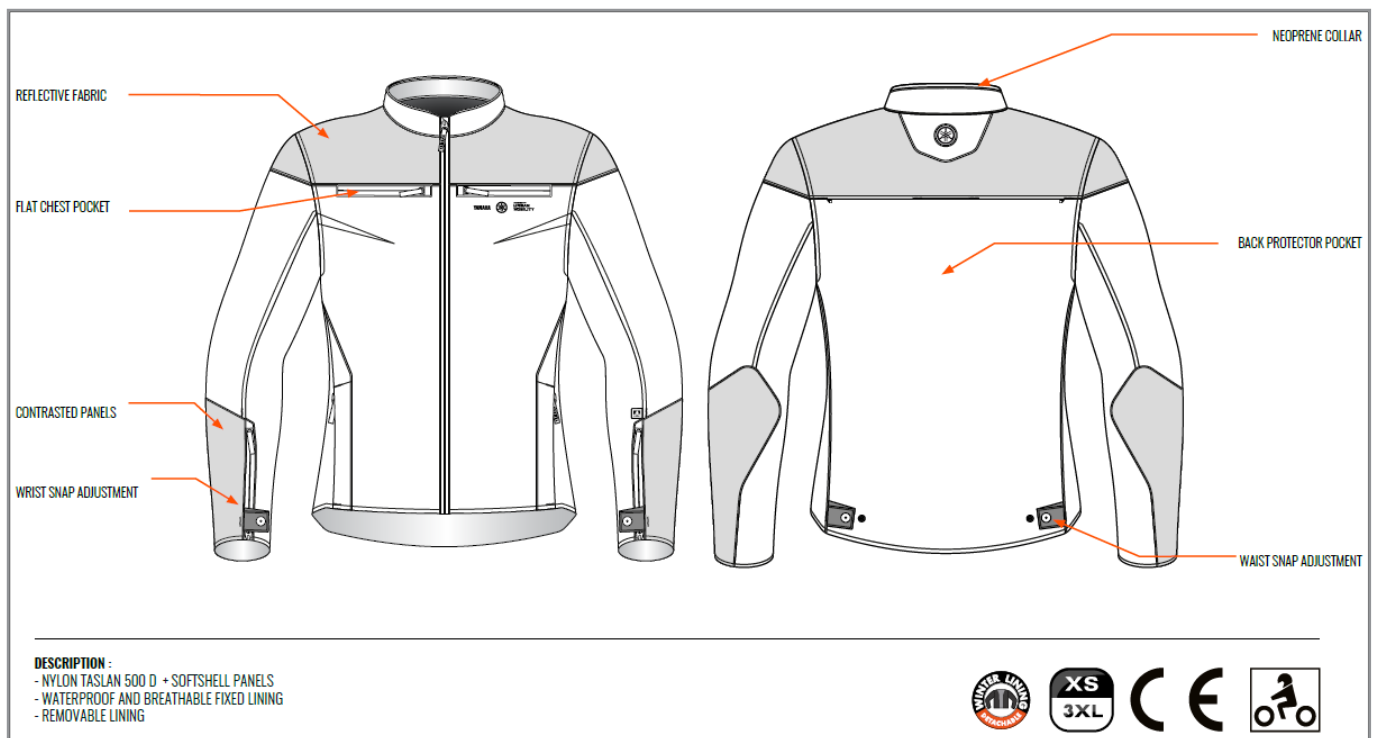


YAMAHA URBAN SHORT RIDING JACKET FEMALE

- NYLON TASLAN 500 D + REINFORCED RELIEVED PANELS
- WATERPROOF AND BREATHABLE FIXED LINING
- REMOVABLE WINTER LINING 160G

Part Nr: **A18-VJ214-B0-xx**
 Sizes: 1S / 0S / 0M / 0L / 1L

Price: CHF 265.-





YAMAHA RAINWEAR JACKET

- WATERPROOF 3000 MM JACKET
- COMPACT PACK
- REFLECTIVE PRINTS
- OUTSIDE POCKET

Part Nr: **B18-NJ300-B0-xx**
Sizes: 0S / 0M / 0L / 1L / 2L

Price: CHF 65.–



YAMAHA RAINWEAR PANT

- WATERPROOF 3000 MM PANTS
- COMPACT PACK
- REFLECTIVE PRINTS
- CARGO POCKET

Part Nr: **B18-NP300-B0-xx**
 Sizes: 0S / 0M / 0L / 1L / 2L

Price: CHF 45.-



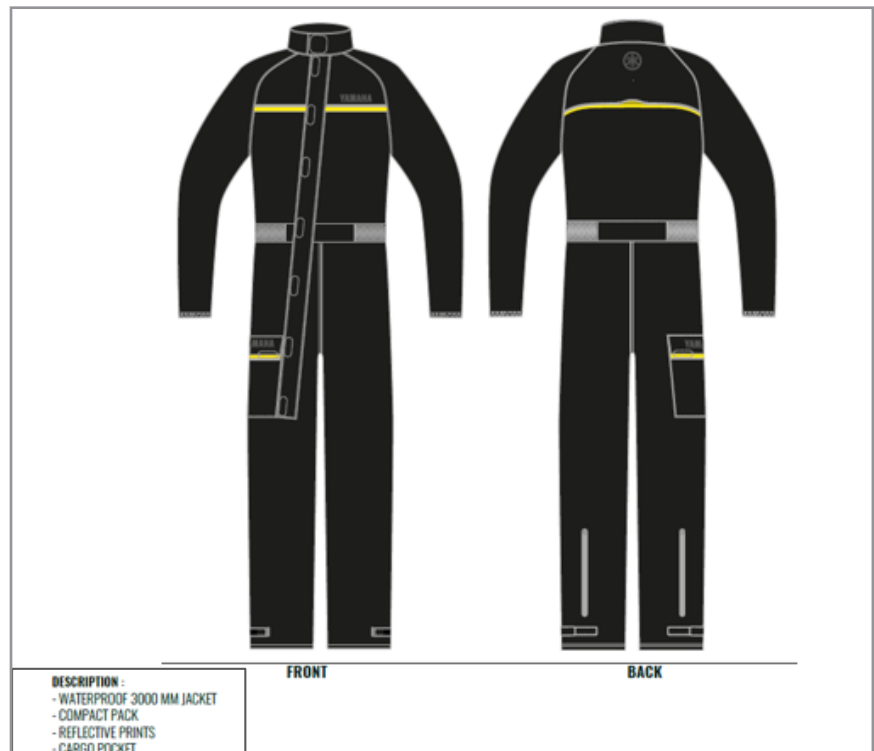


YAMAHA RAINWEAR SUIT

- WATERPROOF 3000 MM SUIT
- COMPACT PACK
- REFLECTIVE PRINTS
- CARCO POCKET

Part Nr: **B18-NS300-B0-xx**
Sizes: 0S / 0M / 0L / 1L / 2L

Price: CHF 75.–

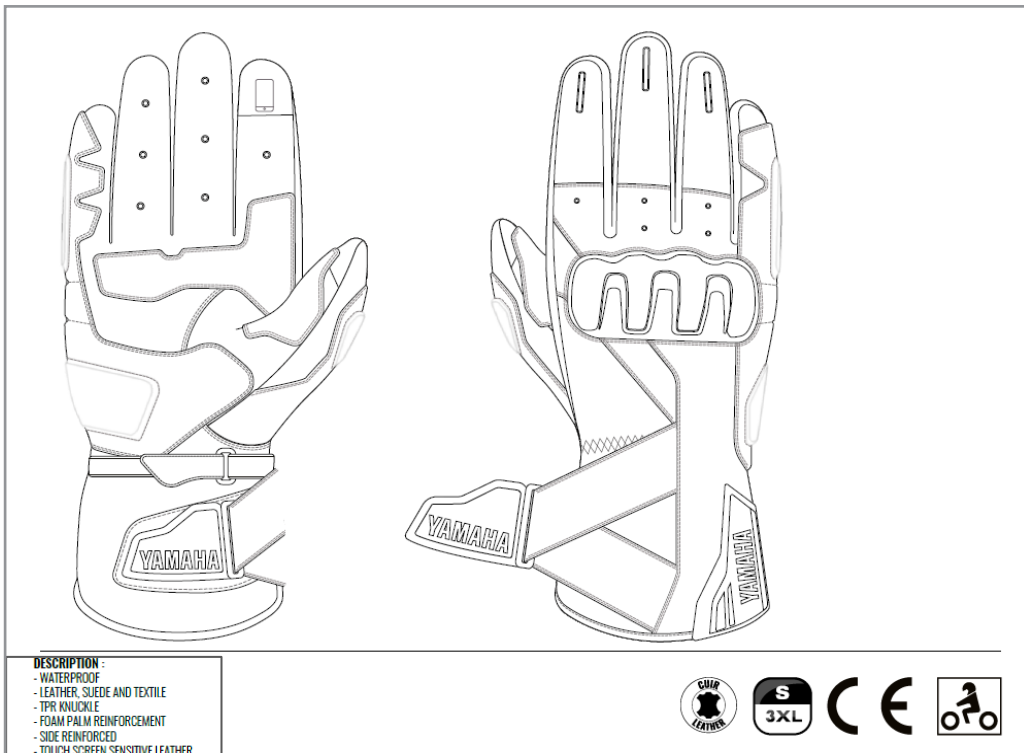


YAMAHA ADVENTURE MALE GLOVES

- WATERPROOF
- LEATHER SUEDE AND TEXTILE
- TPR KNUCKLE
- FOAM PALM REINFORCEMENT
- SIDE REINFORCED
- TOUCH SCREEN SENSITIVE LEATHER

Part Nr: **A18-BG101-B0-xx**
 Sizes: 0S / 0M / 0L / 1L / 2L / 3L

Price: CHF 95.-



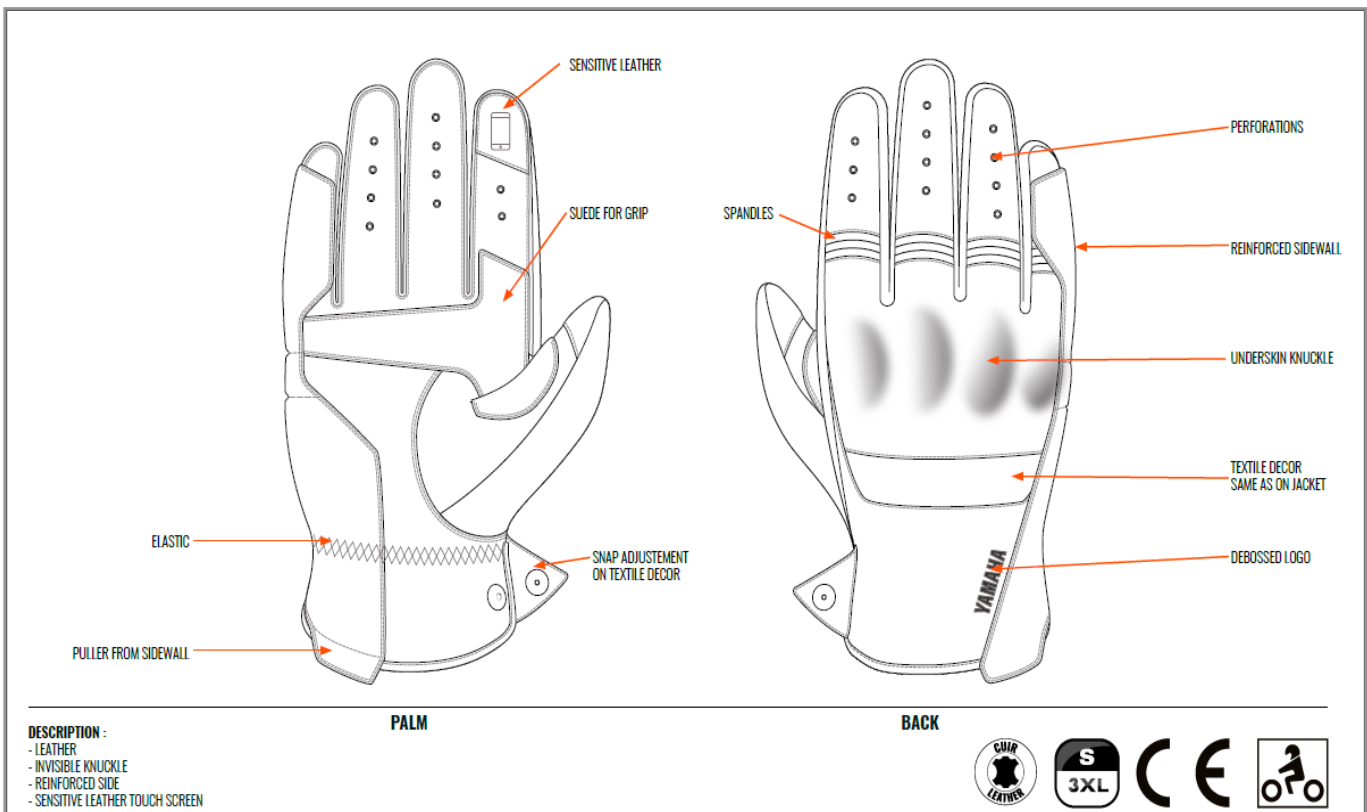


YAMAHA URBAN LEATHER SUMMER GLOVE MALE

- LEATHER
- INVISIBLE KNUCKLE
- REINFORCED SIDE
- SENSITIVE LEATHER TOUCH SCREEN

Part Nr: **A18-VG101-B0-xx**
 Sizes: 0S / 0M / 0L / 1L / 2L / 3L

Price: CHF 75.–

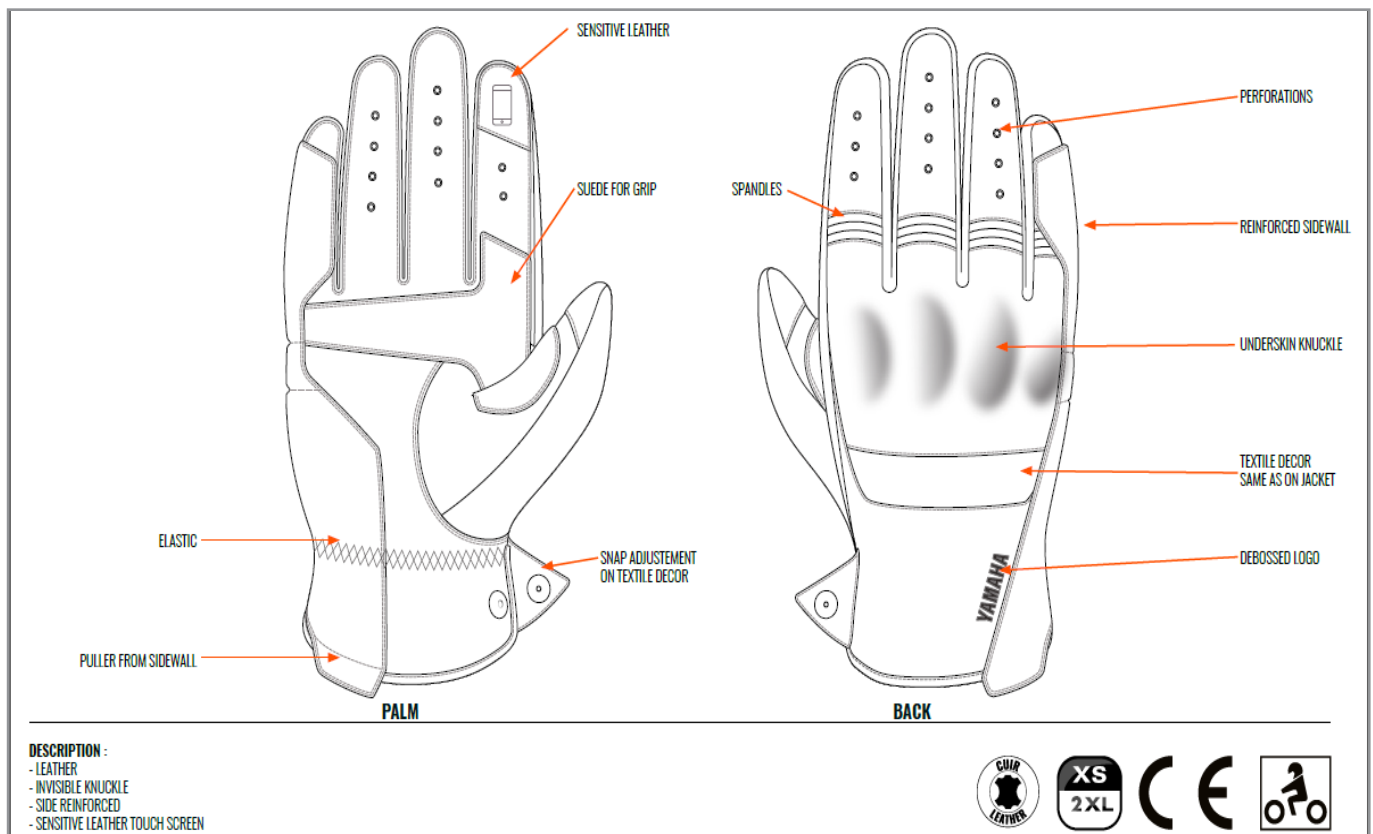


YAMAHA URBAN LEATHER SUMMER GLOVE FEMALE

- LEATHER
- INVISIBLE KNUCKLE
- REINFORCED SIDE
- SENSITIVE LEATHER TOUCH SCREEN

Part Nr: **A18-VG201-B0-xx**
 Sizes: 1S / 0S / 0M / 0L / 1L

Price: CHF 75.-

PALM





- SENSITIVE LEATHER
- SUEDE FOR GRIP
- ELASTIC
- PULLER FROM SIDEWALL
- SNAP ADJUSTMENT ON TEXTILE DECOR

BACK

- PERFORATIONS
- SPANDLES
- REINFORCED SIDEWALL
- UNDERSKIN KNUCKLE
- TEXTILE DECOR SAME AS ON JACKET
- DEBOSSED LOGO

DESCRIPTION :

- LEATHER
- INVISIBLE KNUCKLE
- SIDE REINFORCED
- SENSITIVE LEATHER TOUCH SCREEN

Die Listenpreise sind Preisempfehlungen des Herstellers/Importeurs.

Sie verstehen sich inkl. der gesetzlichen Mehrwertsteuer.

Produktänderungen und Liefermöglichkeiten vorbehalten. Irrtümer und Preisänderungen vorbehalten.
Vorhergehende Preislisten verlieren ihre Gültigkeit.

Les prix figurant sur la liste sont les prix recommandés par le fabricant / l'importateur.

Ils s'entendent TVA comprise.

Sous réserve de modifications des produits et des capacités de livraison.

Sous réserve d'erreurs et de modifications des prix. Les anciennes listes des prix ne sont plus applicables.



Hostettler AG
CH - 6210 Sursee
Tel.: 041 / 926 61 11
Fax: 041 / 926 63 28
E-Mail: info@yamaha-motor.ch