



**Model year: 2007-2012**



## Saddlebags Hard Leather

Lockable saddlebags with premium leather covering

- A perfect match to the flowing lines of your Midnight Star
- Form fixed material
- Covered with premium leather and chrome details for the perfect 'cruiser' looks
- Combined volume: 46L
- Capable of holding a jet helmet
- Quick-release fasteners allow for easy removal
- Lock kit set included. Spare can be ordered separately as well

Article number:

STR-3D873-00-10	Saddlebags
STR-3D873-40-00	Saddlebag mounts
5S6-W2842-00-00	Saddlebags Lock Set Spare

### Specifications

Material	Injected PP with leather cover
Certified conformity (CE/TÜV/WVTA)	N/A
Mounting hardware	Requires installation of the Saddlebag Mounts (article nr. STR-3D873-40-00). Sold separately



## Saddlebag Guards

Protection for the Saddlebags Hard Leather

- Protect your saddlebags in case your bike falls over accidentally
- Design adds extra impact to the impressive looks of the motorcycle itself
- High quality chrome plating

Article number:

STR-3D833-00-00	Saddlebag Guards
-----------------	------------------

### Specifications

Material	Chromed steel
Certified conformity (CE/TÜV/WVTA)	N/A
Mounting hardware	Saddlebag Mounts (article nr. STR-3D873-40-00) are required for mounting



## Saddlebag Trim Rails

Attractive-looking chromed rails that wrap around the hard saddle bags

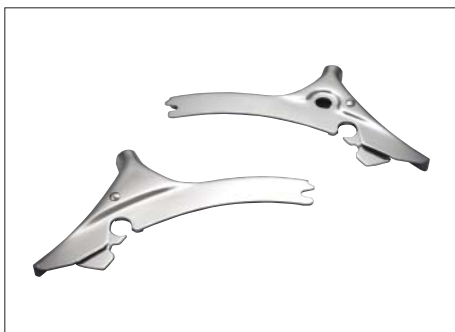
- Add extra impact to the impressive looks of the motorcycle itself
- High quality chrome plating

Article number:

STR-3D872-70-00	Saddlebag Trim Rails
-----------------	----------------------

### Specifications

Material	Chromed steel
Certified conformity (CE/TÜV/WVTA)	N/A
Mounting hardware	Saddlebag Mounts (article nr. STR-3D873-40-00) and Saddlebag Guards (article nr. STR-3D833-00-00) are required for mounting



## Passenger Backrest Base

### Quick-release backrest base

- Quick-release system
- Offers extra passenger comfort
- High-quality polished chromed steel
- The optional Passenger Backrest Uprights and Passenger Backrest Pad Star (article nr. STR-3D841-50-00) are required to complete the passenger backrest construction
- The optional Rear Luggage Rack (article nr. STR-3D851-40-00 for Midnight Star 1300 and STR-2C551-30-00 for Midnight Star 950) can be installed to the backrest

#### Article number:

5S7-F84A0-V0-00	Backrest Base
5S7-F84A2-U0-00	Mounting Kit Midnight Star 1300
5S7-F84A2-T0-00	Mounting Kit Midnight Star 950

Specifications	
Material	Chromed steel
Mounting hardware	Requires model dedicated mounting kit



## Passenger Backrest Upright – low

### Extra comfort for your passenger

- High-quality chromed steel
- Is compatible with the optional backrest pads (article nr. STR-3D841-50-00 or 1D6-2840F-00-00)

#### Article number:

5S7-F16C0-V2-00	
-----------------	--

Specifications	
Material	Chromed steel
Certified conformity (CE/TÜV/WWTA)	N/A
Mounting hardware	Requires the Passenger Backrest Base (article nr. 5S7-F84A0-V0-00)



## Passenger Backrest Upright – high

### Upright to provide extra comfort for your passenger

- High-quality polished chromed steel
- Is compatible with the optional backrest pads (article nr. STR-3D841-50-00 or 1D6-2840F-00-00)
- The optional Rear Luggage Rack (article nr. carrier STR-2C551-30-00) can also be installed to the backrest

#### Article number:

STR-2C541-30-02	
-----------------	--

Specifications	
Material	Polished and chromed steel
Certified conformity (CE/TÜV/WWTA)	N/A
Mounting hardware	Requires the Passenger Backrest Base (article nr. 5S7-F84A0-V0-00)



## Passenger Backrest Pads

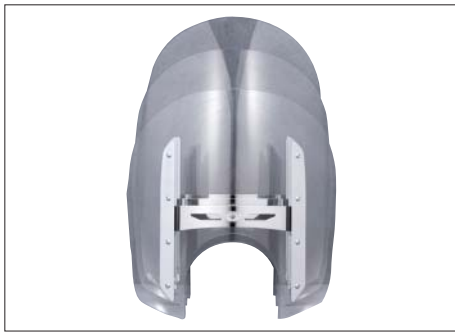
### Pads for the Passenger Backrest Upright

- Offers extra passenger comfort
- Made from durable vinyl
- Designed to match with the stock Midnight Star seats
- Available with embossed Star logo or plain
- Can be mounted to Passenger Backrest Uprights of the Midnight Star 1900, 1300 and 950

#### Article number:

1D6-2840F-00-00	Plain
STR-3D841-50-00	With Star logo

Specifications	
Material	Durable vinyl
Certified conformity (CE/TÜV/WWTA)	N/A
Mounting hardware	Included in package



## Quick-release Windshields Midnight Star 1300

High windshields for improved wind protection

- Tough and durable
- Hard-coated to protect against scratches
- Available in: 38 cm (short) and 59cm (tall)
- Replacement windshields are available

Article number:

3D8-F83J0-V0-00	Windshield - tall
3D8-F83J0-T0-00	Windshield - short
3D8-F83H0-V0-00	Replacement Windshield - tall
3D8-F83H0-T0-00	Replacement Windshield - short
3D8-F83L0-T0-00	Mounting kit

### Specifications

Material	Polycarbonate with anti-scratch coating
Mounting hardware	Requires the separately available Mounting Kit (article nr. 3D8-F83L0-T0-00)



## Chrome Fender Tips

To customize your Midnight Star

- Chrome-plated fender tips are polished and then chrome-plated to a brilliant finish
- Provide a classic look to your Midnight Star 1300
- Available for: the front of the front fender, rear of the front fender and the rear fender
- Fitment requires drilling of the fenders

Article number:

STR-3D826-90-00	Front of Front Fender
STR-3D826-91-00	Rear of front Fender
STR-3D826-92-00	Rear Fender

### Specifications

Material	Chrome-plated cast metal
Certified conformity (CE/TÜV/WWTA)	N/A
Mounting hardware	The front fender tip of the front fender does not fit when the optional Fender Trim Rail (article nr. STR-3D814-10-00) is installed



## Large Engine Guards

Provide protection against vehicle damage

- Stylish engine guards
- Tough, heavily chromed steel tubing
- Caution: These engine guards may provide limited protection against cosmetic vehicle damage in certain situations, such as when tipping over the motorcycle. These engine guards are not intended to protect the rider from injury in a collision

Article number:

STR-3D831-20-10	
-----------------	--

### Specifications

Material	Chromed 32 mm steel tubes
Certified conformity (CE/TÜV/WWTA)	N/A



## Billet Brake Pedal Cover

Adds extra style

- Unique clamshell design adds extra style to your Midnight Star
- Replaces the stock rubber brake pedal cover
- Chromed, highly polished and specially treated to provide a durable and rich chrome finish
- Machined billet housing with rubber inserts

Article number:

STR-1D727-12-03	
-----------------	--

### Specifications

Material	Machined billet with chrome finish
Certified conformity (CE/TÜV/WWTA)	N/A



## Billet Frame Inserts

Frame inserts to be placed next to your steering-head covers

- Give your Midnight Star 1300 a clean and custom look.
- Precision machined and finished to match other Midnight Star accessories

Article number:

STR-3D827-58-01

### Specifications

Material	High quality finished chrome
Certified conformity (CE/TÜV/WVTA)	N/A
Mounting hardware	Included in package



## Billet Generator Cover Insert

Billet insert to place on the generator cover

- Provide an extra touch to the engine of your Midnight Star 1300
- Precision machined and finished to match other Midnight Star accessories

Article number:

STR-3D827-41-01

### Specifications

Material	High quality finished chrome
Certified conformity (CE/TÜV/WVTA)	N/A
Mounting hardware	Included in package



## Billet Passenger Floorboards

Adds extra style to your Midnight Star and extra comfort for your passenger

- Incorporating a moulded rubber cushion for comfort and added durability
- Polished and clear powder-coated, perfectly matching the stock rider floorboards
- Suitable for Midnight Star 1900 (as from MY2006) and Midnight Star 1300 (as from MY2007)

Article number:

STR-1D757-30-07 Floorboard

STR-1D757-40-00 Mounts Midnight Star 1900

STR-3D857-40-01 Mounts Midnight Star 1300

### Specifications

Certified conformity (CE/TÜV/WVTA)	N/A
Mounting hardware	Requires the Passenger Floorboard mounts. Available separately for Midnight Star 1900 and 1300



## Billet Rear Fender Rack

Provides extra luggage-space in a fashionable way

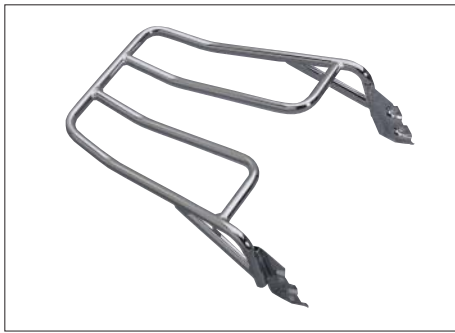
- Adds a new twist to your motorcycle
- Machined out of 6061 billet aluminium then polished and chrome-plated

Article number:

STR-3D851-40-00

### Specifications

Material	Machined billet aluminium with chrome-plated finish
Certified conformity (CE/TÜV/WVTA)	N/A
Mounting hardware	Included in package



## Rear Luggage Rack

### Carrier for the Passenger Backrest Upright

- For added luggage capacity
- High-quality chromed steel
- Features the quick-release system of the Passenger Backrest Upright

Article number:

STR-3D851-30-00

#### Specifications

Material	Chromed steel
Certified conformity (CE/TÜV/WVTA)	N/A
Mounting hardware	Requires the Passenger Backrest Upright (article nr. 5S7-F16C0-V2-00 or STR-3841-30-02) and Passenger Backrest Base (article nr. 5S7-F84A0-V0-00) for installation



## Billet R/H Small Engine Cover Insert

### Small billet insert, to be placed on the right-hand of the engine

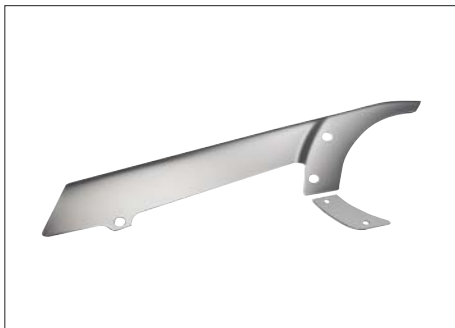
- Provides an extra touch to the engine of your Midnight Star 1300
- Precision machined and finished to match other Midnight Star accessories

Article number:

STR-3D827-44-01

#### Specifications

Material	Billet chromed steel
Certified conformity (CE/TÜV/WVTA)	N/A



## Chrome Upper Belt Guard

### Stylish replacement of the stock black upper belt guard

- Provide an extra touch to your Midnight Star 1300
- High quality chrome plating
- Matching chrome accent for the lower belt guard included

Article number:

STR-3D885-10-01

#### Specifications

Material	Machined high quality 6061-T6 aluminium plate
Certified conformity (CE/TÜV/WVTA)	N/A
Mounting hardware	Included in package



## Black Leather Polish

### Substance to keep your cruiser black leather accessories in good condition

- Restores black leather to its natural lustre by putting colour back into it
- Suitable for all black leather accessories for cruisers

Article number:

ACC-CREAM-PL-SH

#### Specifications

Certified conformity (CE/TÜV/WVTA)	N/A
------------------------------------	-----



## YEC-40 Battery Charger

Charger that can charge the battery of your Yamaha motorcycle, scooter, ATV, SMB and/or marine products

- Contains unique battery charging technology. Fully automatic switch mode charger that analyses the state of the battery, charges and automatically switches to maintenance charging when ready
- Designed for safety: spark-free, protected from reverse polarity connections and short-circuit proof
- Light and compact; handy and easy to store
- Specially tested and approved by Yamaha service engineers to fit our range of motorcycles, scooters, ATV, SMB and other products
- Patented method for desulphation; extends life of the battery
- Also separately available: 1) indicator plug with long cable and "traffic-light" style battery indicator
- 2) built-in panel plug with extra long cable to mount in the dashboard of your Yamaha
- 3) Indicator panel 150, a combination of the indicator plug and built-in panel plug with long cable

Article number:

YME-YEC40-EU-00 EU-plug

YME-YEC40-UK-00 UK-plug

### Specifications

Type	8 step, fully automatic switch model with pulse maintenance
Dimensions	168 x 65 x 38 mm
Weight	0,6 kg
Certified conformity (CE/TÜV/WVTA)	CE-approved
Battery charge capacity	1.2-90 Ah



## YEC-8 Battery Charger

Charger that can charge the battery of your Yamaha motorcycle, scooter, ATV, SMB and/or Marine products

- Contains unique battery charging technology. Fully automatic switch mode charger that analyses the state of the battery, charges and automatically switches to maintenance charging when ready
- Designed for safety: spark-free, protected from reverse polarity connections and short-circuit proof
- Light and compact; handy and easy to store
- Specially tested and approved by Yamaha service engineers to fit our range of motorcycles, scooters, ATV, SMB and other products
- Patented method for desulphation; extends life of the battery
- Also separately available: 1) indicator plug with long cable and "traffic-light" style battery indicator
- 2) built-in panel plug with extra long cable to mount in the dashboard of your Yamaha
- 3) Indicator panel 150, a combination of the indicator plug and built-in panel plug with long cable

Article number:

YME-YEC08-EU-00 EU-plug

YME-YEC08-UK-00 UK-plug

### Specifications

Type	4 step, fully automatic switch model with pulse maintenance
Dimensions	140 x 50 x 38 mm
Weight	0,6 kg
Certified conformity (CE/TÜV/WVTA)	CE-approved
Battery charge capacity	1.2-32Ah



## YEC Indicator Panel 150

Combines a battery charger built-in plug and a battery charge indicator into one

- Connects to the battery chargers YEC-8 and YEC-40
- Allows a neat, solid connection point rather than a flying lead connection
- 'Traffic light' style LED indication: green, orange, red
- 1.5 m extra long cable to allow installation of connector to almost anywhere on your bike
- Rubber grommet to keep dirt out of connector
- Equipped with an inline fuse for extra safety

Article number:

YME-YECIP-15-00

### Specifications

Dimensions	42 x 23 x 55 mm
Weight	~100 gr
Certified conformity (CE/TÜV/WVTA)	N/A
Mounting hardware	Not required. Instructions for use included in package



## YEC Battery Charger Built-in Panel Plug

Smart and easy plug for connection from panel mount socket at the dashboard to the YEC-8 or YEC-40 battery chargers

- Allows a neat, solid connection point rather than a flying lead connection
- 1.5 m extra long cable to allow installation of connector to almost anywhere on your bike
- Rubber grommet to keep dirt out of connector
- Equipped with an inline fuse for extra safety

Article number:

YME-YECPA-15-00

### Specifications

Dimensions	42 x 23 x 55 mm
Weight	~100 gr
Certified conformity (CE/TÜV/WVTA)	N/A
Mounting hardware	Not required. Instructions for use included in package



### YEC Battery Charger Indicator

Gives instant and clear indication of the charge condition of your vehicle's battery

- Connects to the battery chargers YEC-8 and YEC-40
- 'Traffic light' style LED indication: green, orange, red
- 0.5 m long cable
- Rubber grommet to keep dirt out of connector
- Equipped with an inline fuse for extra safety

Article number:

YME-YECPL-05-00

#### Specifications

Dimensions	55 x 20 x 15 mm
Weight	~80 gr
Certified conformity (CE/TÜV/WVTA)	N/A
Mounting hardware	Not required. Instructions for use included in package



### The Yamaha Chain of Quality

Yamaha technicians are fully trained and equipped to offer the best service and advice for your Yamaha product. For this reason, Yamaha strongly recommends visiting an official Yamaha dealer for all your service requirements. Yamaha Genuine Parts & Accessories are especially developed, designed and tested for our Yamaha product range. Yamaha also recommends the use of Yamalube®; our own range of high-tech lubricants, the lifeblood of Yamaha engines. They are developed to carry on working effectively, no matter where you ride. Besides functional and style accessories, Yamaha offers a range of high quality, innovative riding gear designed to keep you comfortable and protected, both on- and off-road. An extensive range of casual wear is also available.

For more information go to: [www.yamaha-motor-acc.com](http://www.yamaha-motor-acc.com)



Always wear a helmet, eye protection and protective clothing when riding any type of powered vehicle. Yamaha encourages you to ride safely and respect fellow riders and the environment. All information in this brochure/catalogue is given for general guidance. Specifications and appearance of Yamaha products and non Yamaha branded products are subject to change without prior notice. Non Yamaha branded products as depicted in this brochure/catalogue are fully developed and produced by respected third parties. Yamaha does not guarantee the availability of the displayed products in local markets. The product range may be limited in some countries and Yamaha has the right to discontinue products without prior notice. Where applicable, prices of Yamaha products may vary according to local requirements and conditions but no rights can be obtained from these prices and information. Sizes of the apparel displayed are indicative - Yamaha recommends you to visit your local Yamaha dealer for the best fit. For further details and availability, please contact your local Yamaha dealer.