

TRACER 900 / 900GT
YAMAHA ACCESSORIES

27.04.2018



NEW PRODUCT

TRACER 900 / GT HIGH SCREEN

B5C-F83J0-00-00

CHF 209.–

High screen for enhanced wind protection on long-distance touring.

- Durable and scratch-resistant
- Wider and higher than original screen
- Fits seamlessly as specifically designed for the model
- Easy replacement of the original screen
- Features the Tracer logo


TRACER 900 / GT CITY SIDE CASE

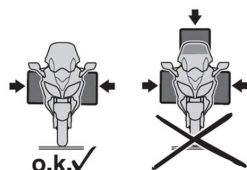
BC6-F0753-1L-04	MDPBM1 LEFT	CHF 630.–
BC6-F0753-1R-04	MDPBM1 RIGHT	CHF 630.–
BC6-F0753-1L-05	BNS4 LEFT	CHF 630.–
BC6-F0753-1R-05	BNS4 RIGHT	CHF 630.–
BC6-F0753-1L-07	SMX LEFT	CHF 630.–
BC6-F0753-1R-07	SMX RIGHT	CHF 630.–
BC6-F0753-1L-01	MDNM6 LEFT	CHF 630.–
BC6-F0753-1R-01	MDNM6 RIGHT	CHF 630.–
BC6-F0753-1L-02	DPBM13 LEFT	CHF 630.–
BC6-F0753-1R-02	DPBM13 RIGHT	CHF 630.–

Beautifully sculpted side cases for touring and urban use painted in the unit color

- Slim side cases to get around city traffic with more ease
- Available in several unit colours
- Matching the colour of your own motorcycle
- The optional fitting Side Case Liners makes it possible to take your luggage off your Yamaha quickly



NEW PRODUCT


TRACER 900 / GT CITY SIDE CASE STAY

B5C-F84G0-00-00

CHF 119.–

Stays system required to mount the optional City Side Cases to your TRACER 900 / GT.

- Easily mounted
- Especially engineered for fitting the unit
- Strong and durable

YAMAHA ACCESSORIES TRACER 900 / 900GT

SIDE CASES CITY 20L

5JW-W0753-1L-05 MATT BLACK LEFT

CHF 595.–

5JW-W0753-1R-05 MATT BLACK RIGHT

CHF 595.–

Beautifully sculpted side cases for urban use.

- Slim side cases to get around city traffic with more ease
- Sold per side



TRACER 900 / GT CITY SIDE CASE STAY

B5C-F84G0-00-00

CHF 119.–

Required part to be ordered

LOCK ASSY (SET OF 2 LOCKS) (3 cylinders)

5P5-28406-01-00 CHF 53.–



SPARE LOCK SET 1 (1PCE)

5P5-28406-09-00 CHF 29.–



TRACER 900 / GT LPH

B5C-H4550-00-00

CHF 149.–

Stylish license plate holder to replace the original

- Adds extra style to your Yamaha
- Includes LED license plate light
- Includes bracket for original reflector
- Supports the standard flashers and the optional available





TRACER SOFT ABS SIDE CASES SET

2PP-FS0SC-00-00

CHF 395.-

Special designed YAMAHA ABS soft side case set.

- Durable ABS
- Light weight
- Easy handling



TRACER 900 / GT SOFT ABS SIDE CASE STAY

B5C-F8423-00-00

CHF 369.-

Stays system required to mount the optional Soft ABS Side Cases to your YAMAHA.

- Easily bolt on
- High-engineered sturdy system
- Strong and durable
- Anti-theft device
- No additional components needed



TRACER 900 / GT CHAIN GUARD

B5C-F2310-00-00

CHF 139.-

Exclusively designed chain guard to replace the standard plastic chain guard.

- Enhances the looks of your Tracer 700
- Consist of two differently coloured components
- Matches perfectly with other optional available billet comp.

TRACER 900 / GT SIDE SLIDER

B90-211D0-02-00

CHF 275.–

- Discrete engine protection in case of a fall
- Protects effectively engine also for slides
- Easy installation -no need for extra stays
- Smooth integration -on naked unit layout
- Genuine Yamaha Accessory



RADIATOR COVER

2PP-FRADC-00-01

CHF 139.–

Stylish, black aluminium radiator cover

- Provides improved protection against small stone impact
- High quality black aluminium finish
- Complements the bike's styling even further



GPS STAY

1RC-234A0-11-00

CHF 59.–

Base to hold a GPS device

- Can hold most motorcycle GPS mount systems
- To be installed on the top yoke near the speedometer
- Mounting of the GPS unit base onto the GPS stay is easy



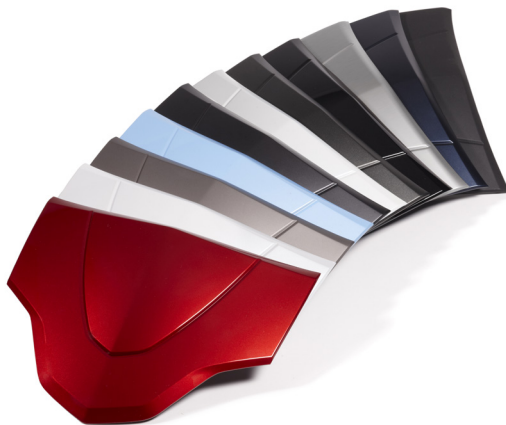
TRACER 900 / GT REAR CARRIER KIT

B5C-F48D0-00-00

CHF 195.–

Aluminum carrier to be mounted to the rear of the unit, to carry a top case or other luggage.

- High-quality finish
- Fits the YAMAHA Top Case
- With integrated passenger hand grips
- Top cases fit directly onto the rear carrier;
- No additional mounting plate is required
- For additional luggage capacity,
- You can fit the optional Yamaha Top Cases City thanks to the integrated design


NEW PRODUCT
COLOUR TOP COVER 39L


52S-F842M-00-00	BLACK	CHF 27.–
52S-F842M-A0-00	SMX (Midnight Black)	CHF 49.–
52S-F842M-0A-00	RMB (Radical Red)	CHF 49.–
52S-F842M-B0-00	WM1 (Avalanche White)	CHF 49.–
52S-F842M-C0-00	DNMM (London Grey)	CHF 49.–
52S-F842M-0C-00	MDNM1 (Sonic Grey)	CHF 49.–
52S-F842M-D0-00	DBM8 (Sky Blue)	CHF 49.–
52S-F842M-0D-00	MDPBM3 (Phantom Blue)	CHF 49.–
52S-F842M-E0-00	RM5 (Lava Red)	CHF 49.–
34B-F842M-0F-00	MDNM3 (Tech Armor)	CHF 49.–
52S-F842M-G0-00	MDBM1 (Magnetic Blue)	CHF 49.–
52S-F842M-H0-00	MYNM1 (Frozen Titanium)	CHF 49.–
52S-F842M-J0-00	BWC1 (Competition White)	CHF 49.–
52S-F842M-K0-00	MATT BLACK	CHF 27.–
52S-F842M-L0-00	ALUMINIUM	CHF 49.–
52S-F842M-N0-00	MNM2 (gray anthracite)	CHF 49.–
52S-F842M-P0-00	MNM3 (gray matt)	CHF 49.–
52S-F842M-Q0-00	MWM3 (white)	CHF 49.–
52S-F842M-R0-00	DBNM8 (Anthrazit)	CHF 49.–
52S-F842M-S0-00	MDRM3 (Red)	CHF 49.–
52S-F842M-T0-00	MS1 (Matt Silver)	CHF 49.–
52S-F842M-U0-00	DRMK (Lava Red)	CHF 49.–
52S-F842M-V0-00	DNMH (Stonehenge Grey)	CHF 49.–



YAMAHA ACCESSORIES TRACER 900 / 900GT

39L TOP CASE

52S-F84A8-00-00 39L TOP CASE BLACK
TEXTURE

CHF 195.–

52S-21780-09-00 KEY CILINDER SET
STADARD

CHF 19.–

59C-281C0-00-00 KEY CILINDER SET ONE KEY
OPERATION

CHF 29.–

YME-BAG39-00-00 INNER BAG
TOP CASE 39L

CHF 49.–

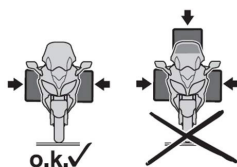
37P-F84U0-A0-00 BACK REST 39L
TOP CASE

CHF 59.–



Quality top case for extra luggage/storage capacity on your Yamaha.

- Exclusively designed for Yamaha Motor by ELM
- Design Europe
- Can hold a (full face) helmet or riding gear
- Available in Matt Black case with lid panel in a fixed number of unit matching colours
- Whenever desired, you can swap the lid panel into a colour of your own taste
- Combine it with the optional 39L Top Case Inner Bag and 39L Top Case Passenger Backrest and comfort is all yours



50L TOP CASE MATT BLACK


34B-F84A8-10-00		CHF 245.-
34B-F84A8-1A-00	ALU	CHF 245.-
34B-F84A8-1B-00	SMX	CHF 245.-
34B-F84A8-1D-00	NMJ	CHF 245.-
34B-F84A8-1E-00	MDYNM3	CHF 245.-
34B-F84A8-1F-00	MDNM3	CHF 245.-
34B-F84A8-1G-00	MDNM1	CHF 245.-
34B-F84A8-1J-00	HTS	CHF 245.-
34B-F84A8-1K-00	MYNM1	CHF 245.-
34B-F84A8-1L-00	BWC1	CHF 245.-
34B-F84A8-1M-00	MNM2	CHF 245.-
34B-F84A8-1N-00	MNM3	CHF 245.-
34B-F84A8-1P-00	MWM3	CHF 245.-
34B-F84A8-1Q-00	MDYNM1	CHF 245.-
34B-F84A8-1R-00	DNMN	CHF 245.-



Quality top case for extra luggage/storage capacity on your Yamaha.

- Exclusively designed for Yamaha Motor by ELM Design Europe
- Can hold two (full face) helmets or riding gear
- Available in Matt Black case with lid side panels in a fixed number of unit matching colours
- Whenever desired, you can swap the lid side panels into a colour of your own taste
- Combine it with the optional 50L Top Case Inner Bag and 50L Top Case Passenger Backrest and comfort is all yours

50L Top Case City Inner Bag


YME-BAG50-00-00 CHF 65.-

Fitting soft bag to put inside the optional Yamaha 50L Top Case City.

- Allows for easy loading and unloading of your luggage from the top case
- Includes hand strap to carry around with ease

BACKREST FOR 50L TOP CASE


37P-F84U0-B0-00

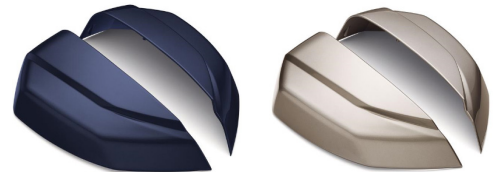
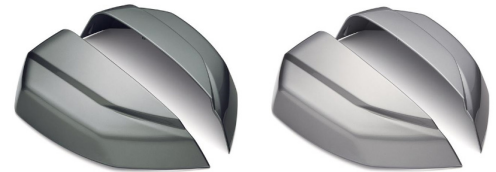
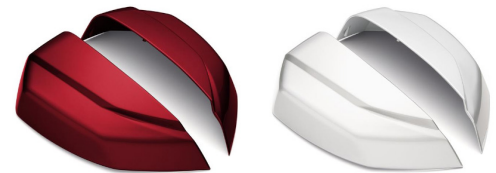
CHF 59.-

Backrest to fit to the front side of the optional 50L top case city.

YAMAHA ACCESSORIES TRACER 900 / 900GT

COLOUR SIDE COVER 50L

34B-F843F-00-00	MB (Matt Black)	CHF 105.-
34B-F843F-0A-00	ALU	CHF 115.-
34B-F843F-0A-D0	BNS4 (Nimbus Grey)	CHF 115.-
34B-F843F-0A-C0	MDPBM3 (Phantom Blue)	CHF 115.-
34B-F843F-0B-00	SMX (Midnight Black)	CHF 115.-
34B-F843F-0C-00	RM5 (Lava Red)	CHF 115.-
34B-F843F-0D-00	NMJ	CHF 115.-
34B-F843F-0E-00	MDYNM3 (Tech Bronze)	CHF 115.-
34B-F843F-0F-00	MDNM3 (Tech Armor)	CHF 115.-
34B-F843F-0G-00	MDNM1 (Sonic Grey)	CHF 115.-
34B-F843F-0H-00	MDBM1 (Magnetic Blue)	CHF 115.-
34B-F843F-0J-00	HTS (High Tech Silver)	CHF 115.-
34B-F843F-0K-00	MYNM1	CHF 115.-
34B-F843F-0L-00	BWC1 (Competition White)	CHF 115.-
34B-F843F-0M-00	UNPAINT (Standard Black)	CHF 115.-
34B-F843F-0N-00	MNM2	CHF 115.-
34B-F843F-0P-00	MNM3 (Matt Grey)	CHF 115.-
34B-F843F-0Q-00	MWM3 (Absolute White)	CHF 115.-
34B-F843F-0R-00	MDYNM1 (Phoenix Bronze)	CHF 115.-
34B-F843F-0T-00	MS1 (Matt Silver)	CHF 115.-
34B-F843F-0U-00	DRMK (Lava Red)	CHF 115.-
34B-F843F-0V-00	DNM5 (Liquid Darkness)	CHF 115.-
34B-F843F-0W-00	MDNOM1 (Quasar Bronze)	CHF 115.-
34B-F843F-0X-00	WM6 (Milky White)	CHF 115.-
34B-F843F-0Y-00	MDPBM1 (Phantom Blue)	CHF 115.-
34B-F843F-0Z-00	MDNM8 (Sword Grey)	CHF 115.-



Lock Set Single Key Top Cases City

59C-281C0-00-00

CHF 29.-

With this one-piece lock set you can operate your Yamaha and close off the optional Top Cases City of your choice.

- Fit the Yamaha 39L and 50L Top Case City



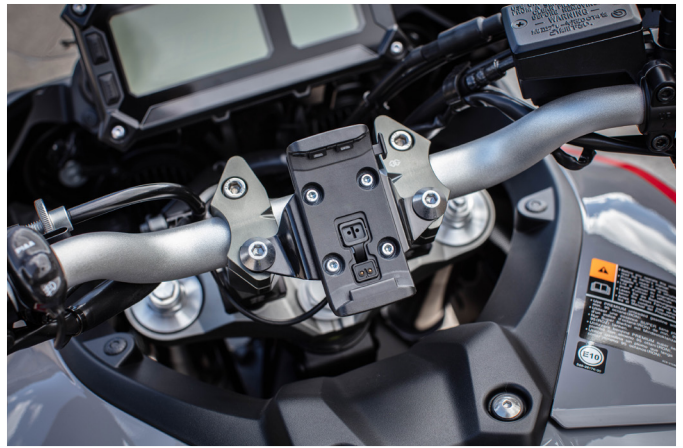
Lock Set Standard Top Cases City

52S-21780-09-00

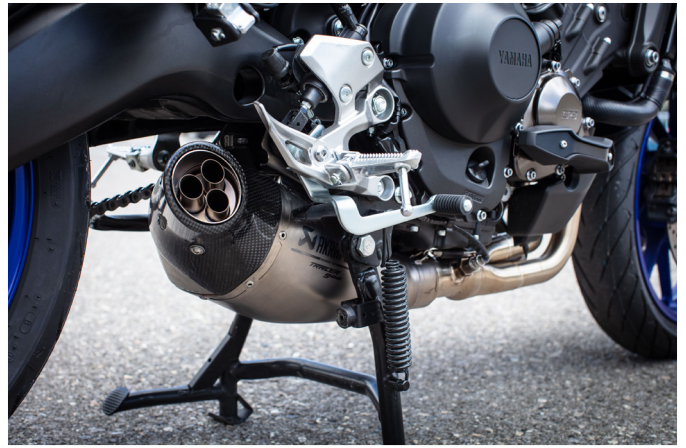
CHF 19.-

One-piece lock set to close off the Top Cases City.





YAMAHA ACCESSORIES TRACER 900 / 900GT



NEW PRODUCT



TRACER 900 / GT COMFORT SEAT

B5C-F4710-B0-00

CHF 219.–

Exclusively designed, stylish seat-replacing the original-providing extra comfort on your journeys

- Provided with special zones for having more comfort
- Two materials with nice stitching which attracts your unit

NEW PRODUCT



TRACER 900 / GT COMFORT SEAT PASSENGER

B5C-F4750-B0-00

CHF 195.–

Providing extra comfort on your journeys for your passenger.

NEW PRODUCT



TRACER 900 / GT COMFORT SEAT - HEATED

B5C-F4710-C0-00

CHF 485.–

Exclusively designed, stylish heated seat – replacing the original – providing added comfort on long-distance journeys and during cold weather conditions

- Special heating zones for additional comfort
- Made of high-quality materials with contrasting stitching
- Designer look to enhance the appearance of your Yamaha
- Safety protection in case battery is low or not charging

YAMAHA ACCESSORIES TRACER 900 / 900GT

TRACER 900 / GT LOW SEAT

B5C-F4710-A0-00

CHF 235.-

Exclusively designed, low seat - replacing the original - providing ample space also for smaller riders.

- Exclusively designed low seat
- Features two materials with stitching to enhance the looks of your Yamaha
- Lower sitting position for easy access for the smaller riders



LED FOG LIGHT KIT PIAA60

BS2-854A3-00-00

CHF 519.-

Genuine fog light kit, which improves your view during bad weather conditions. 60 mm solution with unique design.

- Unique attractive designed fog lights
- First to market -60mm solution
- 50mm bulb with high-intensity light
- Low power consumption -LED technology
- Especially engineered by PIAA for YAMAHA



TRACER 900 / GT FOG LIGHT STAY KIT

B5C-H54A5-00-00

CHF 99.-

Genuine stays to fit YAMAHA Genuine Accessory -LED Fog Light 60mm

- Tailor-made to fit Tracer 900
- Perfect fitting on unit layout
- Mandatory to install Yamaha 60 mm Led Fog Light



TRACER 900 / GT (EU4) - FULL SYS TITAN

90798-32801-00

CHF 1'650.-



Exclusive engraved Tracer 900 logo

- Easy Installation
- Street legal with the optional catalytic convertor
- Made of high quality, heat resistant titanium alloys
- Headers and link pipe are made of stainless steel
- Exciting sound & design
- Features exclusively laser engraved Tracer 900 logo

CATALYTIC CONVERTOR

90798-32404-01

CHF 185.-

Nicht bestellen! Wird automatisch mitgeliefert.
Ne pas commander! Vient livré automatiquement avec.

TRACER 12 V DC OUTLET

2PP-855A0-00-00

CHF 39.-



Outlet to provide 12V DC power for additional convenience.

- Suitable for charging your electronic equipment such as mobile phone or MP3 player
- Genuine Yamaha plug matches the pre-wiring of your Yamaha
- Maximum load: 2 Amp
- Integrated fuse to avoid damage to your Yamaha in case of a short circuit

USB ADAPTOR

YME-FUSBA-00-00

CHF 18.–

Adaptor to connect your to the optional 12V DC sockets to fit a regular USB connector

- 5V DC 1.000 mA adaptor
- Will also connect to 12V sockets in cars

**SUSPENSION LOW LINKAGE**

2PP-F538P-00-00

CHF 55.–

Kit to lower the rear suspension height setting for a lower riding position.

- Allows for better ground access
- 15mm lower rear suspension setting than the original
- Easy replacement of original linkage
- We recommend use in combination with the Low Seat for further lowering of the seat height
- 1 optional part

**TRACER GRIPHEATER**

2PP-829A0-00-00

CHF 229.–

Electrical heated hand grips to replace the standard unit grips.

- Ensures warm hands when riding in cold weather conditions
- Includes integrated control display on the model's meter display
- Auto-shut off function conserves battery life
- Switch housing included
- Three steps temperature control
- Perfect and easy fitment through pre-wired harness



TANK BAG - TOUR

YME-FTBAG-TR-01

CHF 198.-



Functional and sturdy-looking tank bag with innovative quick-lock system; handy when you require extra luggage capacity on those long-distance journeys.

- Tank bag quick-lock system allows quick and easy installation/removal; especially handy when unit has to be refueled
- Volume: 16L - expandable to 22L
- Map holder and extra side pockets for small items such as your wallet and mobile phone
- Features the Yamaha logo
- Includes hand carry grip at the front
- Includes shoulder strap and rain cover as well

TANK BAG - CITY

YME-FTBAG-CT-01

CHF 179.-



Functional and sturdy-looking tank bag with innovative quick-lock system; handy when you require extra luggage capacity.

- Tank bag quick-lock system allows quick and easy mounting/removal; especially handy when unit has to be refueled
- Volume: 11L - expandable to 15L
- Map holder and extra side pockets for small items such as your wallet and mobile phone
- Features the Yamaha logo
- Includes hand carry grip at the front
- Includes shoulder strap and rain cover as well

TANK BAG RING

YME-FTBAG-RG-00

CHF 33.-



Strong and safe fixation system that allows mounting/removal of the tank bags Tour and City to the tank.

- Bolts easily to the fuel tank cap of your Yamaha
- One-click mounting/removal thanks to the quick-lock system of the tank bags and ring
- No hassle when refueling

YAMAHA ACCESSORIES TRACER 900 / 900GT

TANK BAG-SPORT

YME-FTBAG-SP-00

CHF 119.–

Functional and sturdy-looking tank bag with innovative quick-lock system; small and handy when you require extra luggage capacity on short trips.

- Tank bag quick-lock system allows quick and easy mounting/removal; especially handy when unit has to be refueled
- Volume: 5L - expandable to 9L
- Map holder
- Yamaha branded
- Includes hand carry grip at the front
- Includes rain cover
- Small and sporty design allows for more flexibility in riding positions



TANK BAG ADAPTOR KIT

2PP-FTBAD-00-00

CHF 75.–

Kit that enables you to mount one of the optional Tank Bags on your Yamaha for extra luggage capacity.

- Package includes the Tank Bag Mount Ring to fix or remove the tank bags with ease on/from your bike



TRACER TANK KNEE PADS

2PP-FTPAD-00-00

CHF 59.–

Protection pads to protect both sides of the fuel tank.

- Genuine Yamaha design
- Protects the fuel tank against scratches from the rider's pants
- Features the Tracer logo
- Sold as a set





TOURING FOOTPEGS RIDER

2PP-FRFPG-00-00 TECH-BRONZE
2PP-FRFPG-10-00 BLACK

CHF 285.–

Stylish and high-quality finished rider foot peg replacements.

- Stylish and high-quality rider foot rests replacement
- Designed wider foot rest area
- Ergonomic shape for long distance touring
- Assures steady grip for rider's feet
- With vibration absorbing dampers
- OEM fitting
- Sold per set of two



TRACER CLUTCH LEVER BLACK

2PP-F3912-00-00

CHF 175.–

High quality finished clutch lever, replacing the original.

- Fully adjustable to rider's hand size and position
- Provides perfect clutch lever control
- Matching optional Billet Brake Lever to further enhance the looks of your Yamaha



TRACER BRAKE LEVER BLACK

2PP-F3922-00-00

CHF 175.–

High quality finished brake lever, replacing the original.

- Fully adjustable to rider's hand size and position
- Adjusts easily into 35 positions thanks to the central hand wheel
- Provides perfect front brake lever control
- By Gilles Tooling
- Matching the optional available billet clutch lever to further enhance the looks of your Yamaha

TRACER FRONT AXLE SLIDER

2PP-FFAXP-00-00

CHF 125.–

Kit containing high-quality finished components to protect the front axle ends.

- Additionally, it gives your Yamaha extra style and cool looks; especially when combined with the optional Rear Axle Protection Kit
- Made of strong and durable POM plastic with bronze-coloured anodized aluminum detail finish
- By Gilles Tooling

**TRACER REAR AXLE SLIDER**

2PP-FRAXP-00-00

CHF 125.–

Kit containing high-quality finished components to protect the rear axle ends.

- Additionally, it gives your Yamaha extra style and cool looks; especially when combined with the optional Front Axle Protection Kit
- Made of strong and durable POM plastic with bronze-coloured anodized aluminum detail finish
- By Gilles Tooling

**QUICK-SHIFT KIT CP3 ENGINE**

2SC-181A0-00-00

CHF 329.–

Quick shifter kit to fit on units with CP3 engine

- Quick-shift system for effortless shifting
- Derived from racing technology





SPROCKET COVER CP3 ENGINE

BS2-FFSPC-00-00

CHF 225.–

Accessory billet sprocket cover for units with CP3 engine -MT-09, Tracer 900 / GT and XSR-900

- CNC machined for reduced weight and fine design
- Open sprocket view
- With engraved YAMAHA logo
- With engraved Gilles Tooling „GG“ logo



TRACER HANDLEBAR RISERS

2PP-FHBR5-00-00

CHF 359.–

High-quality handlebar risers that replace the originals. They raise the handlebars to offer a wide adjustability range of the handlebar position.

- Provides adjustment of the handlebar position in the front-rear / high-low axis for a comfortable riding position
- Adjustability range: height 0 to 30mm, front-rear axis



BRAKE FLUID CONTAINER

B34-FBFLC-00-00

CHF 79.–

Stylish black Aluminum Brake Fluid Container.

- Complements the bike's styling even further
- High-quality matt black finish
- By Gilles Tooling
- Features the YAMAHA logo

ENGINE OIL FILLER CAP

2PP-FE0LC-00-00

CHF 79.–

Custom oil filler cap -replacing the original -for an extra styling touch.

- Includes three different coloured rings -titanium-look, blue and red -to match your styling
- Compliments the other billet anodized accessories in the line-up
- By Gilles Tooling



REAR MASTER CYLINDER COVER

B67-FBFLC-00-00

CHF 59.–

- CNC machined aluminum for finest design
- With engraved Gilles Tooling „GG“ logo
- Includes 3 anodized color inserts (silver, red and blue)





LED FLASHERS

YME-H0789-00-10 BLACK CHF 65.–

YME-W0789-20-00 CARBON CHF 65.–

Stylish flashers to replace the standard flashers.

- Unique design by GK Design specially for Yamaha
- Includes blinker speed regulating resistor
- 9 LEDs per blinker
- 55cm long wire with shrink sleeve
- Sold per set of two

Technical specifications

- Certificate: CE
- Height: 30 mm
- Width: 35 mm
- Length: 86 mm



LED FLASHERS PLUS

YME-FLB2F-10-00 FRONT CHF 119.–

YME-FLB2R-10-00 REAR CHF 119.–

Styleful front flashers with unique integrated position light.

- Unique design by GK Design specially for Yamaha
- Include flashers speed regulating resistor
- High quality material and finish
- Include quick mounting connectors
- Include black and silver plates to finish the styling of your Yamaha to your liking
- Fully E-homologated
- More safety on the road thanks to position light
- Sold per set of two
- Can be combined with the optional LED Flashers Plus Rear

Technical specifications

- Certificate: CE

Suitable for:

- Most Yamaha motorcycles



- **REAR** - With integrated position light and brake light!

- **FRONT** - With integrated position light!

Die Listenpreise sind Preisempfehlungen des Herstellers/Importeurs.
Die Preise sind für den Handel unverbindlich. Sie verstehen sich inkl. der gesetzlichen Mehrwertsteuer.
Produktänderungen und Liefermöglichkeiten vorbehalten. Irrtümer und Preisänderungen vorbehalten.
Vorhergehende Preislisten verlieren ihre Gültigkeit.

*Les prix figurant sur la liste sont les prix recommandés par le fabricant / l'importateur.
Les prix ne sont pas obligatoires pour le commerce. Ils s'entendent TVA comprise.
Sous réserve de modifications des produits et des capacités de livraison.
Sous réserve d'erreurs et de modifications des prix. Les anciennes listes des prix ne sont plus applicables.*



Hostettler AG
CH - 6210 Sursee
Tel.: 041 / 926 61 11
Fax: 041 / 926 63 28
E-Mail: info@yamaha-motor.ch