



Model year: 2010-2012



Article number:

39P-F48D0-00-00

### Rear Carrier FZ8-Series

Aluminium luggage carrier to be mounted at the rear of the bike

- Designed to fit the optional Yamaha 39L and 50L Top Cases
- With integrated passenger hand grips
- Fits both the FZ8 and Fazer8
- Modification of rear cowling is required

#### Specifications

Material	Die-cast aluminium, matt black powder coated
Certified conformity (CE/TÜV/WVTA)	N/A
Does not fit with	FZ8-Series optional passenger grab bars (article nr. 39P-247J0-00-00)
Mounting hardware	Included in package. To fit the optional Yamaha 39L and 50L Top Case the Universal Mounting Plate 39L / 50L Top Case (article nr. 37P-F84X0-00-00) is also required



Article number:

37P-F84X0-00-00 Universal Mounting Plate

34B-F84X0-00-00 Mounting Plate Adaptor Kit Majesty 400

### Universal Mounting Plate 39L / 50L Top Case

Plate to mount the optional Yamaha 39L and 50L Top Case

- Required when used in conjunction with the optional model-dedicated rear carrier and Yamaha 39L or 50L Top Case
- Allows fitment of Yamaha's 39L or 50L Top Case

#### Specifications

Material	Hard plastic
Certified conformity (CE/TÜV/WVTA)	N/A
Mounting hardware	Not required with exception for the Majesty 400. For this model the model-specific Adaptor Kit Mounting Plate is additionally required. Mounting instructions are included in package



## 50L Top Case

Quality top case for extra luggage/storage capacity on your Yamaha

- Exclusively designed for Yamaha Motor by ELM Design Europe
- Easy to install and remove from your Yamaha
- Can hold two (full face) helmets or riding gear
- Available standard in Matt Black. Possibility, though, to change the colour of the lid's side panels to one that either matches your Yamaha or to a contrasting colour. The coloured lids can be ordered with the top case as one or separately. See the available colours for the lid also separately
- Solid & durable double shell construction
- Can be locked and for added convenience even with a single key operation system

Please note – the Top Case is a stand-alone product and it is not recommended that it is installed and used with the available Yamaha Side Cases

Article number:

34B-F84A8-10-00	Matt Black
34B-F84A8-1A-00	Aluminium-coloured
34B-F84A8-1B-00	Midnight Black (SMX)
34B-F84A8-1C-00	Lava Red (RM5)
34B-F84A8-1D-00	Moon Shadow (NMJ)
34B-F84A8-1E-00	Tech Bronze (MDYNM3)
34B-F84A8-1F-00	Tech Armor (MDNM3)
34B-F84A8-1G-00	Sonic Grey (MDNM1)
34B-F84A8-1H-00	Magnetic Blue (MDBM1)
34B-F84A8-1J-00	High Tech Silver (HTS)
34B-F84A8-1K-00	Frozen Titanium (MYNM1)
34B-F84A8-1L-00	Competition White (BWC1)
52S-21780-09-00	Lock Set Standard
59C-281C0-00-00	Lock Set Single Key Operation

### Specifications

Material	Injected PP (body & lid) / Injected PMMA (reflectors)
Certified conformity (CE/TÜV/WVTA)	N/A
Mounting hardware	Not required for some models. Other models require the model-dedicated rear carrier and the universal mounting plate. The Majesty 400 requires additionally the model-specific Mounting Plate Adaptor Kit. Please check the online Yamaha Top Case application chart what is required for your Yamaha
Suitable for	Most Yamaha scooters and motorcycles



## Coloured Lid Side Panels 50L Top Case

Range of coloured lid side panels for Yamaha's 50L top case, to exchange with the standard version

- Choose a colour that matches their Yamaha or alternatively choose a contrasting colour of your own choice
- Easy to install

Article number:

34B-F843F-00-00	Matt Black
34B-F843F-0A-00	Aluminium-coloured
34B-F843F-0B-00	Midnight Black (SMX)
34B-F843F-0C-00	Lava Red (RM5)
34B-F843F-0D-00	Moon Shadow (NMJ)
34B-F843F-0E-00	Tech Bronze (MDYNM3)
34B-F843F-0F-00	Tech Armor (MDNM3)
34B-F843F-0G-00	Sonic Grey (MDNM1)
34B-F843F-0H-00	Magnetic Blue (MDBM1)
34B-F843F-0J-00	High Tech Silver (HTS)
34B-F843F-0K-00	Frozen Titanium (MYNM1)
34B-F843F-0L-00	Competition White (BWC1)

### Specifications

Material	Injected ABS
Certified conformity (CE/TÜV/WVTA)	N/A
Mounting hardware	Not required
Suitable for	The Yamaha 50L Top Case



## Passenger Backrest 50L Top Case

Backrest to fit to the front side of the optional Yamaha 50L Top Case

- Gives added comfort to your passenger
- Easy installation to the top case

Article number:

37P-F840U-B0
--------------

### Specifications

Material	Polyurethane
Certified conformity (CE/TÜV/WVTA)	N/A
Mounting hardware	Included in package
Suitable for	The Yamaha 50L Top Case



Article number:

YME-BAG50-00-00

## Inner Bag 50L Top Case

Fitting bag to put inside the optional Yamaha 50L Top Case

- Allows easy loading and unloading of your luggage from the top case
- Includes hand strap to carry around with ease

### Specifications

Material	Polyester
Certified conformity (CE/TÜV/WVTA)	N/A
Suitable for	Yamaha 50L Top Case



Article number:

34B-F84A8-00-00	Matt Black
34B-F84A8-0A-00	Midnight Black (SMX)
34B-F84A8-0B-00	Avalance White (WM1)
34B-F84A8-0C-00	London Grey (DNMM)
34B-F84A8-0J-00	Competition White (BWC1)
52S-21780-09-00	Lock Set Standard
59C-281C0-00-00	Lock Set Single Key Operation

## 39L Top Case

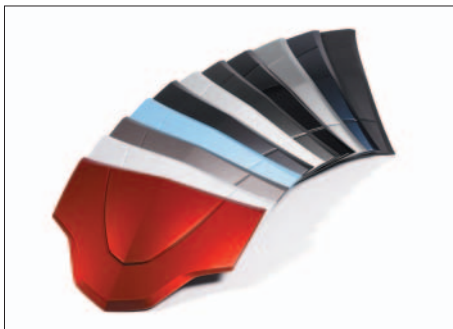
Quality top case for extra luggage/storage capacity on your Yamaha

- Exclusively designed for Yamaha Motor by ELM Design Europe
- Easy to install and remove from your Yamaha
- Can hold a (full face) helmet or riding gear
- Available standard in Matt Black. Possibility, though, to change the colour of the lid to one that either matches your Yamaha or to a contrasting colour. See the available colours for the lid separately. A number of coloured lids can be ordered with the top case as one or separately
- Solid & durable double shell construction
- Can be locked and for added convenience even with a single key operation system

Please note – the Top Case is a stand-alone product and it is not recommended that it is installed and used with the available Yamaha Side Cases

### Specifications

Material	Injected PP (body & lid) / Injected PMMA (reflectors)
Certified conformity (CE/TÜV/WVTA)	N/A
Mounting hardware	Not required for some models. Other models require the model-dedicated rear carrier and the universal mounting plate. The Majesty 400 requires additionally the model-specific Mounting Plate Adaptor Kit. Please check the online Yamaha Top Case application chart what is required for your Yamaha
Suitable for	Most Yamaha scooters and motorcycles



Article number:

34B-F842M-00-00	Matt Black
34B-F842M-0A-00	Midnight Black (SMX)
34B-F842M-0B-00	Avalance White (WM1)
34B-F842M-0C-00	London Grey (DNMM)
34B-F842M-0D-00	Sky Blue (DBM8)
34B-F842M-0E-00	Lava Red (RM5)
34B-F842M-0F-00	Tech Armor (MDNM3)
34B-F842M-0G-00	Magnetic Blue (MDBM1)
34B-F842M-0H-00	Frozen Titanium (MYNM1)
34B-F842M-0J-00	Competition White (BWC1)
34B-F842M-0L-00	Aluminium-coloured

## Coloured Lid Panels 39L Top Case

Range of coloured lid panels for Yamaha's 39L top case, to exchange with the standard version

- Choose a colour that matches your Yamaha or alternatively choose a contrasting colour of your own choice
- Easy to install

### Specifications

Material	Injected ABS
Certified conformity (CE/TÜV/WVTA)	N/A
Mounting hardware	Not required
Suitable for	The Yamaha 39L Top Case



## Passenger Backrest 39L Top Case

Backrest to fit to the front side of the optional Yamaha 39L Top Case

- Gives added comfort to your passenger
- Easy installation to the top case

Article number:

37P-F840U-A0

### Specifications

Material	Polyurethane
Certified conformity (CE/TÜV/WVTA)	N/A
Mounting hardware	Included in package
Suitable for	The Yamaha 39L Top Case
Does not fit with	The Yamaha 39L Top Case Touring



## Inner Bag 39L Top Case

Fitting bag to put inside the optional Yamaha 39L Top Case

- Allows easy loading and unloading of your luggage from the top case
- Includes hand strap to carry around with ease

Article number:

YME-BAG39-00-00

### Specifications

Material	Polyester
Certified conformity (CE/TÜV/WVTA)	N/A
Does not fit with	The Yamaha 39L Top Case Touring



## Lock Set 39L/50L Top Cases

1-piece lock set to close off the Yamaha 39L/50L Top Case

- For added convenience, option with a single key operation for a number of models available. See online application chart for which models this is applicable

Article number:

52S-21780-09-00 Lock Set Standard

59C-281C0-00-00 Lock Set Single Key Operation

### Specifications

Material	Zinc alloy/brass
Certified conformity (CE/TÜV/WVTA)	N/A
Mounting hardware	Included in package
Suitable for	The Yamaha 39L and 50L Top Case
Does not fit with	The Yamaha 39L Top Case Touring



## High Screen Fazer8

Higher screen for improved wind protection

- Gives improved wind protection – 77 mm higher than the standard screen
- Impact-resistant, scratch-resistant
- Easy installation, specifically designed to fit the unit
- Suitable for Fazer8 model only

Article number:

39P-F83J0-00-00

### Specifications

Material	Transparent hard-coated 4mm polycarbonate
Dimensions	423 x 347 mm
Certified conformity (CE/TÜV/WVTA)	WVTA-approved



## Fly Screen FZ8

Screen for improved wind protection

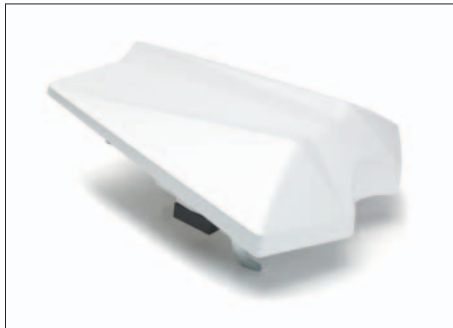
- Designed for improved wind protection
- Easy to install, specifically designed to fit the unit
- Gives added styling to model
- Suitable for FZ8 model only

Article number:

39P-F61C0-00-00

### Specifications

Material	Dark smoke 3mm polycarbonate
Dimensions	174 x 338 mm
Certified conformity (CE/TÜV/WVTA)	WVTA-approved



## Seat cover FZ8-Series

Cover to replace passenger seat

- Transforms bike into a single-seater for a sportier look
- Easily installed, specifically designed to fit the unit
- Fits both the FZ8 and Fazer8
- Available in bike matching colours

Article number:

39P-247F0-00-00 Midnight Black (SMX)

39P-247F0-10-00 Competition White (BWC1)

39P-247F0-20-00 Yamaha Blue (DPBMC)

39P-247F0-30-00 Viper Blue (VPBC5)

39P-247F0-40-00 Lunar Grey (MNM3)

### Specifications

Material	Injection-moulded ABS
Certified conformity (CE/TÜV/WVTA)	N/A



## Sub cowling FZ8-Series

Sub cowling for added style

- Adds more style to your bike
- Specifically designed to fit the unit
- Fits both the FZ8 and Fazer8
- Available in bike matching colours

Article number:

39P-283R0-01-P0 Midnight Black (SMX)

39P-283R0-01-P1 Competition White (BCW1)

39P-283R0-01-P2 Yamaha Blue (DPBMC)

39P-283R0-01-P3 Viper Blue (VPBC5)

39P-283R0-01-P4 Lunar Grey (MNM3)

### Specifications

Material	Injection-moulded ABS
Certified conformity (CE/TÜV/WVTA)	WVTA-approved



## Roller Protectors FZ8-Series

Protectors to minimise damage to your bike

- Minimises damage if bike is accidentally dropped
- Features FZ8 logo
- Fits both the FZ8 and Fazer8

Article number:

39P-W0741-00-00

### Specifications

Material	Black anodized aluminium stays and solid nylon rollers
Certified conformity (CE/TÜV/WVTA)	N/A
Does not fit with	FZ8-Series optional engine guard (article nr. 39P-F43B0-00-00)



Article number:  
39P-F43B0-00-00

## Engine Guards FZ8-Series

Guard placed around the engine for protection

- Increased protection for the engine
- Strong metal tubes
- Fits both the FZ8 and Fazer8
- Specifically designed to fit the unit

### Specifications

Material	Black powder-coated. Metal tubes.
Certified conformity (CE/TÜV/WVTA)	N/A
Does not fit with	FZ8-Series optional roller protectors (article nr. 39P-W0741-00-00)



Article number:  
39P-W0746-00-00

## Radiator cover FZ8-Series

Stylish cover for radiator

- Protects the radiator from the impact of small stones
- Adds additional styling to the bike
- Features the FZ8 logo
- Specifically designed to fit the unit
- Fits both the FZ8 and Fazer8

### Specifications

Material	Solid anodized 2 mm thick aluminium
Certified conformity (CE/TÜV/WVTA)	N/A



Article number:  
39P-247J0-00-00

## Passenger Grab Bar FZ8

Grab bars provides proper support for the passenger

- Designed to give your passenger a better support
- Fits only the naked FZ8
- Modification of rear cowling is required; requires cut-out of the original cowling

### Specifications

Certified conformity (CE/TÜV/WVTA)	N/A
Does not fit with	FZ8-Series optional rear carrier (article nr. 39P-F48D0-00-00)



Article number:  
39P-F16EO-01-00

## Licence Plate Holder FZ8-Series

Stylish licence plate holder to replace the original

- Adds more style to your bike
- Features FZ8 logo
- Supports the standard flashers and the optional black, chrome or carbon-look LED flashers
- Includes LED licence plate light
- Includes bracket for original reflector

### Specifications

Material	Black anodized aluminium
Certified conformity (CE/TÜV/WVTA)	CE-approved (for licence plate light)
Mounting hardware	Included in package (brackets for licence plate light, standard flasher, optional LED flashers and standard reflectors)





## Main Stand FZ8-Series

Center Stand for more stable parking

- Solid design for easy and stable parking
- Makes it easier to maintain your bike with Yamalube® oil and care products
- Specifically designed to fit the unit
- Fits both the FZ8 and Fazer8

Article number:

39P-271A0-00-00

### Specifications

Material	Metal tubes, powder-coated in black
Certified conformity (CE/TÜV/WVTA)	WVTA-approved



## LED Flashers

Set of 2 stylish flashers to replace the standard flashers

- Unique, stylish design by GK Design specially for Yamaha
- Including blinker speed regulating resistor
- 9 LEDs per blinker
- 55cm long wire with shrink sleeve
- Available in 3 variations: black, chrome and carbon-look

Article number:

YME-W0789-00-00 Black

YME-W0789-10-00 Chrome

YME-W0789-20-00 Carbon-look

### Specifications

Material	ABS housing, polycarbonate lens
Dimensions	86 x 35 x 30 mm
Certified conformity (CE/TÜV/WVTA)	CE-approved
Mounting hardware	Included in package (brackets, tie-wraps and connectors)
Suitable for	Most Yamaha motorcycles except FJR and cruiser models



## Grip Heater MC 120

Grips with heater to replace standard unit grips

- Ensures warm hands when riding in cold weather conditions
- Includes temperature control button
- Auto-shut function conserves battery life
- Switch bracket included
- Grip length 120 mm

Article number:

YME-W0792-00-00

### Specifications

Certified conformity (CE/TÜV/WVTA)	N/A
Mounting hardware	Included in package
Suitable for	YZF-R1 (as from MY2009), FZ1 and FZ1 Fazer (as from MY2006), FZ8 and Fazer8 (as from MY2010), XJ-Series models (as from MY2009), MT-01 (all MYs), XJR1300 (all MYs), WR250R/X (as from MY2008)



## Tank Pad FZ8-Series

Protection pad for fuel tank

- Protects fuel tank from scratches from zipper rider's jacket
- Genuine Yamaha design
- Features FZ8 logo
- Specifically designed to fit the unit
- Suitable for both FZ8 and Fazer8

Article number:

39P-W0790-00-00

### Specifications

Material	Solid resin
Certified conformity (CE/TÜV/WVTA)	N/A



Article number:  
39P-W0790-10-00

## Tank Pad Yamaha

Protective pad for fuel tank

- Protects fuel tank from scratches from zipper rider's jacket
- Features Yamaha logo

### Specifications

Material	Solid resin
Certified conformity (CE/TÜV/WVTA)	N/A
Suitable for	Most Yamaha motorcycles except the cruiser, off-road and enduro models



Article number:  
YME-W0750-20-00

## City Tankbag

Tank-mounted bag for Yamaha street motorcycles

- Soft tankbag with flexible bottom and easy fixation
- 12L volume
- Includes pocket for small items such as your wallet and mobile phone
- Two map holders
- Reflective striping, rain cover included

### Specifications

Certified conformity (CE/TÜV/WVTA)	N/A
Suitable for	Most Yamaha street motorcycles; XJR1300, FZ1, FZ8, FZ6, XJ6, TDM, MT-01, MT-03, etc.



Article number:  
YME-W0750-10-00

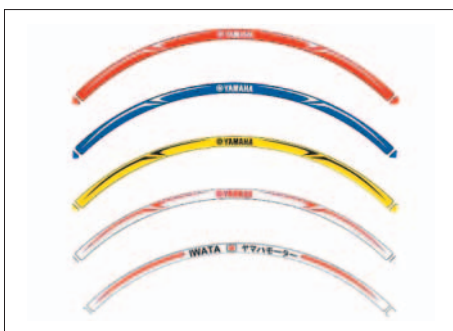
## Touring Tankbag

Tank-mounted bag for Yamaha touring motorcycles

- Soft tankbag with flexible bottom and easy magnetic fixation
- Integrated map holder, reflective stripes on side
- Includes pocket for small items such as your wallet and mobile phone
- Includes shoulder strap, small inner bag and rain cover
- Expandable (19L to 23L) volume

### Specifications

Certified conformity (CE/TÜV/WVTA)	N/A
Suitable for	Most Yamaha touring motorcycles; FJR models, FZ1 Fazer, Fazer8, TDM, etc.



Article number:  
YME-W0790-RS-BL Blue  
YME-W0790-RS-RD Red  
YME-W0790-RS-WH White  
YME-W0790-RS-YE Yellow  
YME-W0790-RS-IW Iwata

## Rim Sticker Set

Sticker set for the rims of 17" wheels

- Embellishes your bike into a more sportier look
- Specifically designed for Yamaha
- Available in 4 colour variations featuring the Yamaha logo and 1 colour variation featuring the Yamaha Iwata graphics
- One sticker set contains stickers for 1 wheel (2 sides, 4 parts per side)
- Suitable for 17" wheels only

### Specifications

Material	Solid resin
Certified conformity (CE/TÜV/WVTA)	N/A
Mounting hardware	Not required. Application instructions included in package
Suitable for	Most Yamaha motorcycles with 17" wheels





## YEC-40 Battery Charger

Charger that can charge the battery of your Yamaha motorcycle, scooter, ATV, SMB and/or marine products

- Contains unique battery charging technology. Fully automatic switch mode charger that analyses the state of the battery, charges and automatically switches to maintenance charging when ready
- Designed for safety: spark-free, protected from reverse polarity connections and short-circuit proof
- Light and compact; handy and easy to store
- Specially tested and approved by Yamaha service engineers to fit our range of motorcycles, scooters, ATV, SMB and other products
- Patented method for desulphation; extends life of the battery
- Also separately available: 1) indicator plug with long cable and "traffic-light" style battery indicator  
2) built-in panel plug with extra long cable to mount in the dashboard of your Yamaha  
3) Indicator panel 150, a combination of the indicator plug and built-in panel plug with long cable

Article number:

YME-YEC40-EU-00 EU-plug

YME-YEC40-UK-00 UK-plug

### Specifications

Type	8 step, fully automatic switch model with pulse maintenance
Dimensions	168 x 65 x 38 mm
Weight	0,6 kg
Certified conformity (CE/TÜV/WVTA)	CE-approved
Battery charge capacity	1.2-90 Ah



## YEC-8 Battery Charger

Charger that can charge the battery of your Yamaha motorcycle, scooter, ATV, SMB and/or Marine products

- Contains unique battery charging technology. Fully automatic switch mode charger that analyses the state of the battery, charges and automatically switches to maintenance charging when ready
- Designed for safety: spark-free, protected from reverse polarity connections and short-circuit proof
- Light and compact; handy and easy to store
- Specially tested and approved by Yamaha service engineers to fit our range of motorcycles, scooters, ATV, SMB and other products
- Patented method for desulphation; extends life of the battery
- Also separately available: 1) indicator plug with long cable and "traffic-light" style battery indicator  
2) built-in panel plug with extra long cable to mount in the dashboard of your Yamaha  
3) Indicator panel 150, a combination of the indicator plug and built-in panel plug with long cable

Article number:

YME-YEC08-EU-00 EU-plug

YME-YEC08-UK-00 UK-plug

### Specifications

Type	4 step, fully automatic switch model with pulse maintenance
Dimensions	140 x 50 x 38 mm
Weight	0,6 kg
Certified conformity (CE/TÜV/WVTA)	CE-approved
Battery charge capacity	1.2-32Ah



## YEC Indicator Panel 150

Combines a battery charger built-in plug and a battery charge indicator into one

- Connects to the battery chargers YEC-8 and YEC-40
- Allows a neat, solid connection point rather than a flying lead connection
- 'Traffic light' style LED indication: green, orange, red
- 1.5 m extra long cable to allow installation of connector to almost anywhere on your bike
- Rubber grommet to keep dirt out of connector
- Equipped with an inline fuse for extra safety

Article number:

YME-YECIP-15-00

### Specifications

Dimensions	42 x 23 x 55 mm
Weight	~100 gr
Certified conformity (CE/TÜV/WVTA)	N/A
Mounting hardware	Not required. Instructions for use included in package



## YEC Battery Charger Built-in Panel Plug

Smart and easy plug for connection from panel mount socket at the dashboard to the YEC-8 or YEC-40 battery chargers

- Allows a neat, solid connection point rather than a flying lead connection
- 1.5 m extra long cable to allow installation of connector to almost anywhere on your bike
- Rubber grommet to keep dirt out of connector
- Equipped with an inline fuse for extra safety

Article number:

YME-YECPA-15-00

### Specifications

Dimensions	42 x 23 x 55 mm
Weight	~100 gr
Certified conformity (CE/TÜV/WVTA)	N/A
Mounting hardware	Not required. Instructions for use included in package



### YEC Battery Charger Indicator

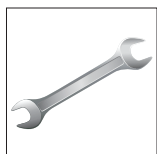
Gives instant and clear indication of the charge condition of your vehicle's battery

- Connects to the battery chargers YEC-8 and YEC-40
- 'Traffic light' style LED indication: green, orange, red
- 0.5 m long cable
- Rubber grommet to keep dirt out of connector
- Equipped with an inline fuse for extra safety

Article number:  
YME-YECPL-05-00

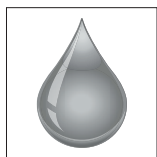
#### Specifications

Dimensions	55 x 20 x 15 mm
Weight	~80 gr
Certified conformity (CE/TÜV/WVTA)	N/A
Mounting hardware	Not required. Instructions for use included in package



### The Yamaha Chain of Quality

Yamaha technicians are fully trained and equipped to offer the best service and advice for your Yamaha product. For this reason, Yamaha strongly recommends visiting an official Yamaha dealer for all your service requirements. Yamaha Genuine Parts & Accessories are especially developed, designed and tested for our Yamaha product range. Yamaha also recommends the use of Yamalube®; our own range of high-tech lubricants, the lifeblood of Yamaha engines. They are developed to carry on working effectively, no matter where you ride. Besides functional and style accessories, Yamaha offers a range of high quality, innovative riding gear designed to keep you comfortable and protected, both on- and off-road. An extensive range of casual wear is also available. For more information go to: [www.yamaha-motor-acc.com](http://www.yamaha-motor-acc.com)



Always wear a helmet, eye protection and protective clothing when riding any type of powered vehicle. Yamaha encourages you to ride safely and respect fellow riders and the environment. All information in this brochure/catalogue is given for general guidance. Specifications and appearance of Yamaha products and non Yamaha branded products are subject to change without prior notice. Non Yamaha branded products as depicted in this brochure/catalogue are fully developed and produced by respected third parties. Yamaha does not guarantee the availability of the displayed products in local markets. The product range may be limited in some countries and Yamaha has the right to discontinue products without prior notice. Where applicable, prices of Yamaha products may vary according to local requirements and conditions but no rights can be obtained from these prices and information. Sizes of the apparel displayed are indicative – Yamaha recommends you to visit your local Yamaha dealer for the best fit. For further details and availability, please contact your local Yamaha dealer.